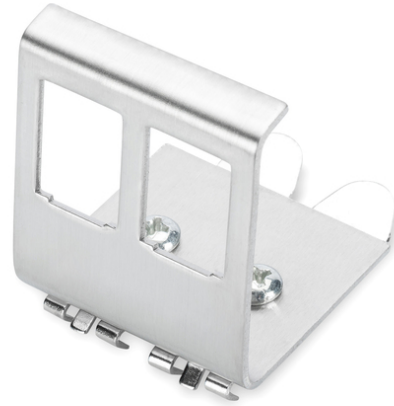


# DIGITUS DIN-Rail Adapter for 2x Keystone module

**AN-25185**  
**EAN 4016032306344**



### DIN-Rail adapter for 2x Keystone Modules

The DIGITUS® DIN-Rail adapter function as adapter for the installation of Keystone Modules. They are available as 1-port or 2-port version.

- Layout keystone entry: 45° outlet
- Area of application: Electrical distribution box
- Norms: ISO/IEC 11801 3rd Ed., EN 50173-1, EIA/TIA 568-C

- General properties:
- Suitable for installation on DIN-Rail in electrical distribution boxes
- Technical properties:
- Housing material: Stainless steel
- Physical properties:
- Operation temperature: -20° C to +70 °C (ISO/IEC 11801, EN 50173-1, ANSI/TIA/EIA 568 C)

Logistics						
	Number (pcs)	Weight (kg)	Depth (cm)	Width (cm)	Height (cm)	cm <sup>3</sup>
Packaging Unit Carton	200	9.50	32.00	27.00	33.00	28,512.00
Packaging Unit Inside	10	0.48	25.00	6.00	6.00	900.00
Packaging Unit Single	1	0.05	18.00	8.00	4.00	576.00
Net single without Packaging	1	0.05	10.00	7.00	4.00	0.00