

# DIGITUS mini GBIC (SFP) Module, 1.25 Gbps, 0.55km

**DN-81000**  
**EAN 4016032305651**



**1.25 Gbps SFP Module, Multimode LC Duplex Connector, 850nm, Up to 550m**

The DIGITUS® mini GBIC (SFP) transceiver modules offer highest quality and reliability. Whether from switch to switch, converter to switch, converter to converter or any else application: The wide product range of DIGITUS® modules makes possible a flexible usage of the fiber technology. The conformity to the MSA (Multi Source Agreement) standard ensures a compatibility to third party manufacturers.

**The plug and play fiber connection**

- Mini GBIC SFP (Small Form Factor Pluggable) module
- Compatible with the following manufacturers: Allied Telesis, Allnet, Avaya, CISCO, D-Link, Edimax, FINISAR, FORCE 10, Gigamon, Intellinet, KTI Networks, Level One, PLANET, Tenda, TP-Link, TRENDnet, Mikrotik, ENTERASYS, RIVERSTONE, Unifi, Ubiquiti, ZyXEL, ZTE
- High quality and excellent reliability
- 1.25 Gbps Maximum Data Rate
- Compliant to IEEE 802.3z Gigabit Standard
- Class 1 laser product compliant with EN 60825-1
- Easy plug-and-play installation
- MSA (Multi Source Agreement) compliant

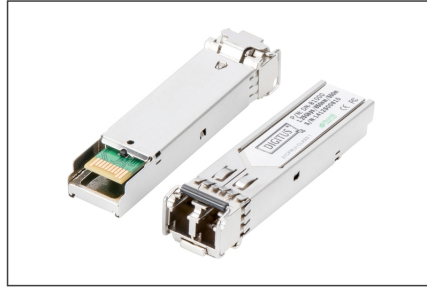
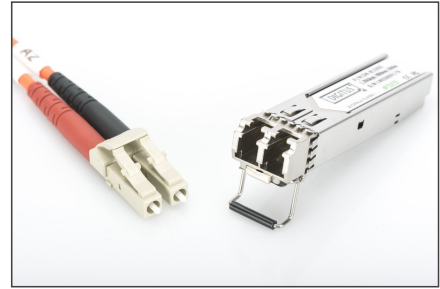
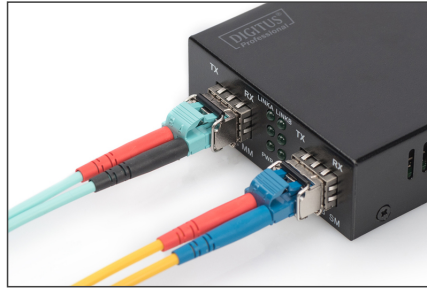
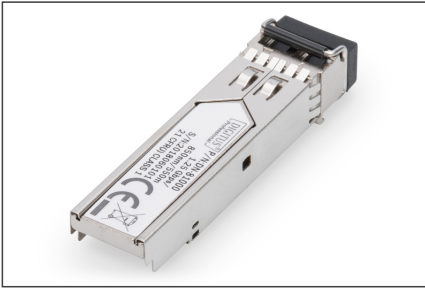
- Hot pluggable
- Connector: 1x LC Duplex
- 1000Base-SX - For Short Haul
- Wavelength: 850nm
- Transmission power: minimum -8 dBm, maximum -3 dBm
- Sensitivity Receiving Power: Minimum -20 dBm
- For a Distance of up to 0.55km
- Suitable for 50/125µm and 62.5/125µm multimode fiber cables
- Safe fast-locking mechanism
- 3.3V power supply
- Operating temperature: 0 °C ~ 70 °C
- Mode: Multimode
- Connector: LC
- Distance (km): 0.5
- Wavelength: 850 nm
- DDM Support: no
- Broadcasting Mode: Unidirectional
- Manufacturer compatibility: Universal (MSA), Cisco
- Ethernet speed: Gigabit

**Package contents**

- SFP module

Logistics						
	Number (pcs)	Weight (kg)	Depth (cm)	Width (cm)	Height (cm)	cm³
Packaging Unit Carton	240	8.50	50.00	39.00	25.00	48,750.00
Packaging Unit Inside	30	1.06	7.00	20.00	30.00	4,200.00
Packaging Unit Single	1	0.04	11.50	5.50	2.50	158.13
Net single without Packaging	1	0.02	1.00	5.90	0.80	0.00

More images:



SFP Modules							
Product Number	DOM Code	Speed	Distance	Connector	Mounting	Operating Temperature	Industrial Version
<b>Full Duplex</b>							
DM-0101	42760000040	1.0 Gbps	2 km	LC Multimode Duplex	191mm	0 to +70 °C	✓
DM-0102	42760000070	1.0 Gbps	550 m	LC Singlemode Duplex	191mm	0 to +70 °C	✓
DM-0104	42760000070	1.0 Gbps	550 m	LC Singlemode Duplex	191mm	0 to +70 °C	✓
<b>Simplex</b>							
DM-0105	42760000040	1.0 Gbps	2 km	LC Multimode Duplex	191mm	0 to +70 °C	✓
DM-0106	42760000040	1.0 Gbps	2 km	LC Singlemode Duplex	191mm	0 to +70 °C	✓
DM-0107	42760000040	1.0 Gbps	2 km	LC Singlemode Duplex	191mm	0 to +70 °C	✓
DM-0108	42760000070	1.0 Gbps	550 m	LC Singlemode Duplex	191mm	0 to +70 °C	✓
DM-0109	42760000070	1.0 Gbps	550 m	LC Singlemode Duplex	191mm	0 to +70 °C	✓
DM-0110	42760000040	1.0 Gbps	550 m	LC Singlemode Duplex	191mm	0 to +70 °C	✓
<b>Half Duplex</b>							
DM-0111	42760000040	1.0 Gbps	2 km	LC Multimode Duplex	191mm	0 to +70 °C	✓
DM-0112	42760000070	1.0 Gbps	550 m	LC Singlemode Duplex	191mm	0 to +70 °C	✓
DM-0113	42760000070	1.0 Gbps	550 m	LC Singlemode Duplex	191mm	0 to +70 °C	✓
DM-0114	42760000040	1.0 Gbps	2 km	LC Singlemode Duplex	191mm	0 to +70 °C	✓
DM-0115	42760000070	1.0 Gbps	550 m	LC Singlemode Duplex	191mm	0 to +70 °C	✓
DM-0116	42760000070	1.0 Gbps	550 m	LC Singlemode Duplex	191mm	0 to +70 °C	✓
DM-0117	42760000040	1.0 Gbps	2 km	LC Singlemode Duplex	191mm	0 to +70 °C	✓
DM-0118	42760000070	1.0 Gbps	550 m	LC Singlemode Duplex	191mm	0 to +70 °C	✓
DM-0119	42760000070	1.0 Gbps	550 m	LC Singlemode Duplex	191mm	0 to +70 °C	✓
DM-0120	42760000040	1.0 Gbps	2 km	LC Singlemode Duplex	191mm	0 to +70 °C	✓