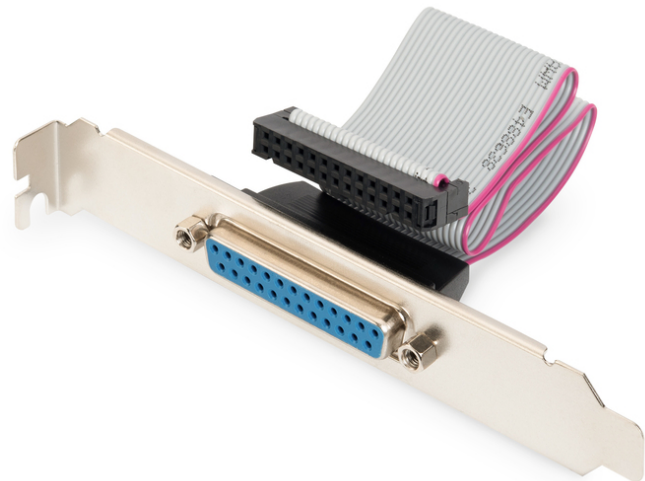


# DIGITUS Кабель для слотовых заглушек для принтера

AK-580300-003-E  
EAN 4016032304913



**Printer Slot Bracket cable, D-Sub25 - IDC 26pin F/F, 0.25m, parallel/serial, be**

Этот кабель позволяет внешнее использование параллельного порта на материнской плате.

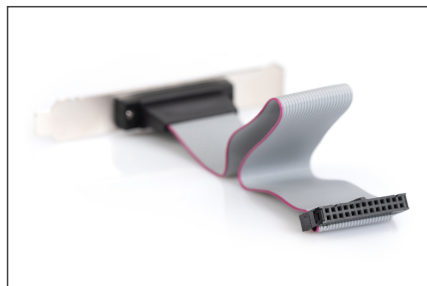
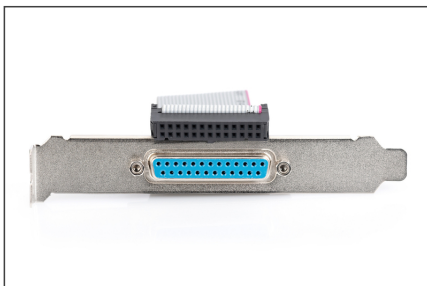
**Надежное и стабильное соединение**

- D-Sub 25-pin jack <=> socket connector 26pin
- AWG28
- UL2651
- Assignment: med\_data\_cable\_assignment\_2

- Assortment: Serial and Parallel Adapters
- Color cable: beige
- Color connector: black
- Connector 1: DSUB, 25-pin, jack
- Connector 2: Socket Connector, 26-pin
- Connector surface: nickel-plated
- Hoods: plastic
- Wire material: CU
- Length: 0.25 m
- Shielding: Unshielded

Logistics						
	Number (pcs)	Weight (kg)	Depth (cm)	Width (cm)	Height (cm)	cm³
Packaging Unit Carton	300	15.20	47.00	31.00	32.00	46,624.00
Packaging Unit Inside	10	0.51	24.00	5.00	17.00	2,040.00
Packaging Unit Single	1	0.05	12.00	2.00	10.00	240.00
Net single without Packaging	1	0.04	14.50	12.10	2.00	0.00

**More images:**



**Safety notes**

- When plugging and unplugging the cable, only grasp the plug and do not pull directly on the cable.
- Cables must not be kinked sharply or bent at tight angles, as this can damage the inner wires and lead to failures.
- Make sure that the cables are not under tensile load, as this can damage the insulation and the wires inside the cable.

- Ensure that cables are not laid in areas where they can be easily damaged mechanically.
- Cables should not be used in environments with extremely high or very low temperatures. Observe the product information on the maximum operating temperature of the cable
- Check cables regularly for visible damage such as cracks, kinks or signs of wear. Defective cables should be replaced immediately to avoid failures, short circuits or even electric shocks.

**EU responsible person**

EU based economic operator ensuring the product complies with the required regulations.

ASSMANN Electronic GmbH  
Auf dem Schüffel 3  
Lüdenscheid, Germany  
<https://www.assmann.com>  
[info@assmann.com](mailto:info@assmann.com)