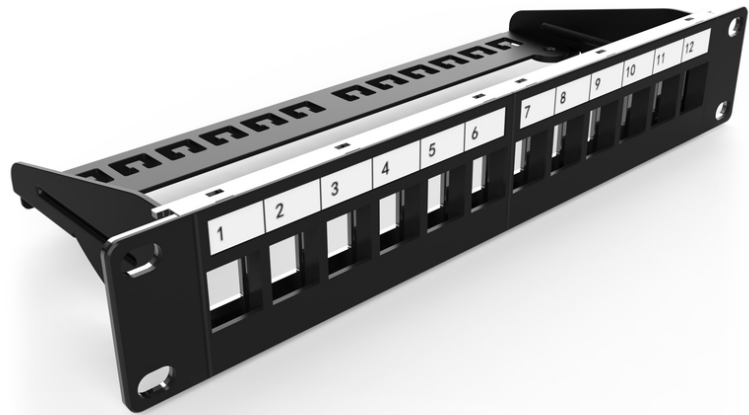


# DIGITUS Modular Patch Panel, 12-port

DN-91420  
EAN 4016032280804



**Modular Patch Panel, shielded, 12-Port Blank, 1U, 254mm (10") Rack Mount, black RAL 9005**

The DIGITUS® 12 port patch panel is suitable for installation in 10 inch wall housings or cabinets and can accommodate shielded or unshielded keystone modules. The network cables can also be fixed on the rear rail using cable ties. The patch panel is made of robust, cold-rolled steel and is supplied in black (RAL 9005). In addition, the patch panel can be connected to the existing protective earth conductor (PE) using an earth cable (not included in the package content).

**Suitable for shielded and unshielded DIGITUS® Keystone Modules and Couplers**

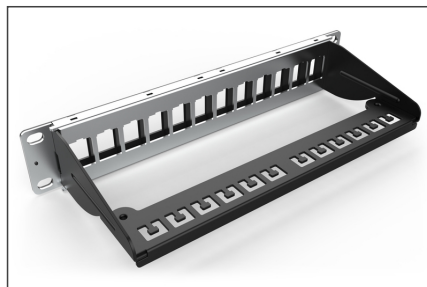
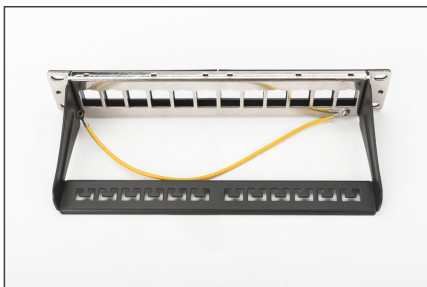
- Patch Panel for Keystone Modules
- Shielded
- Suitable for 254 mm (10") Rack Mount
- 1U
- Color black (RAL 9005)
- Label window with tag

**Attributes**

- Color: black, RAL 9005
- Ports: 12
- Units: 1

Logistics						
	Number (pcs)	Weight (kg)	Depth (cm)	Width (cm)	Height (cm)	cm³
Packaging Unit Carton	20	3.42	52.00	28.50	31.00	45,942.00
Packaging Unit Inside	1	0.17	12.00	27.00	5.50	1,782.00
Packaging Unit Single	1	0.17	12.00	27.00	5.50	1,782.00
Net single without Packaging	1	0.30	1.20	25.40	4.40	0.00

**More images:**



**Safety notes**

- Protect product from moisture

**EU responsible person**

EU based economic operator ensuring the product complies with the required regulations.

ASSMANN Electronic GmbH  
Auf dem Schüffel 3  
Lüdenscheid, Germany  
<https://www.assmann.com>  
[info@assmann.com](mailto:info@assmann.com)