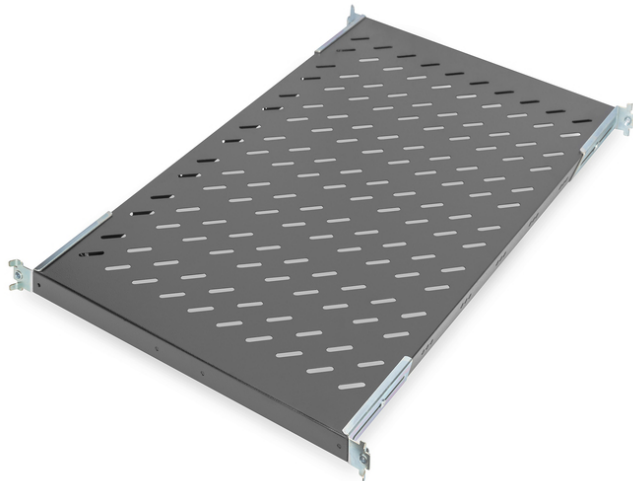


DIGITUS Shelve for Network and Server cabinets

DN-19 TRAY1-1000-ECB
EAN 4016032262480



1U fixed shelf for racks from 1000 mm depth 44x486x770 mm, up to 50 kg, black (RAL 9005)

1U fixed shelf for racks from 1000 mm depth, 44x486x770 mm, up to 50 kg, black (RAL 9005)

- Four fixing points fit at the sites of the rear and front mounting angles
- Fixed installation
- Perforated sheet steel
- Load carrying capacity: Up to 50 kg
- Requires 1U
- Complete with fixing material

- 4-point fixing (front- and rear 19" profile rails)

Attributes

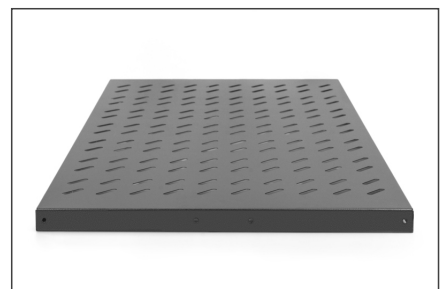
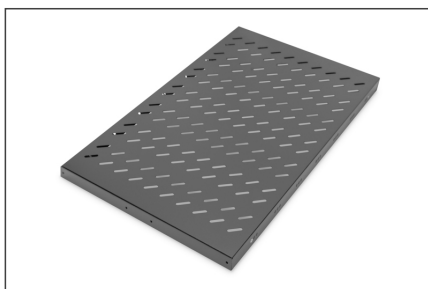
- Color: black, RAL 9005
- Load capacity: 50 kg
- Mounting type: Fixed mounting
- Units: 1
- Inch form factor (IEC 60297): 482.6 mm (19")
- Suitable cabinet depth: ≥ 1000 mm

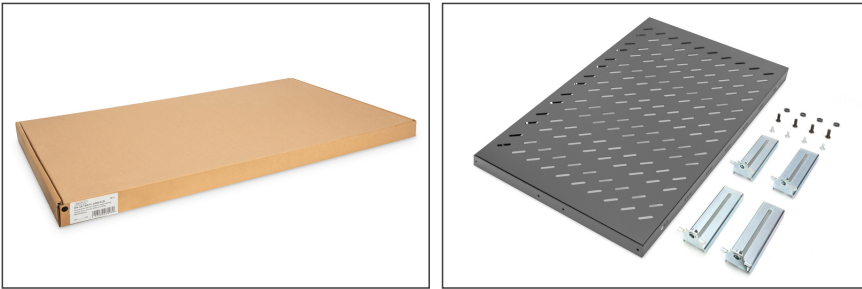
Package contents

- Installation set (screws, cage nuts, washers)

Logistics						
	Number (pcs)	Weight (kg)	Depth (cm)	Width (cm)	Height (cm)	cm ³
Packaging Unit Carton	4	18.00	46.00	22.00	81.50	82,478.00
Packaging Unit Inside	1	4.50	79.50	50.00	5.50	21,862.50
Packaging Unit Single	1	4.50	79.50	50.00	5.50	21,862.50
Net single without Packaging	1	3.60	77.00	48.60	4.40	10,575.00

More images:



**Safety notes**

- When installing and using the accessory product for network cabinets, observe the respective safety instructions of the manufacturer or the cabinet system in which you want to use the accessory.

EU responsible person

EU based economic operator ensuring the product complies with the required regulations.

ASSMANN Electronic GmbH
Auf dem Schüffel 3
Lüdenscheid, Germany
<https://www.assmann.com>
info@assmann.com