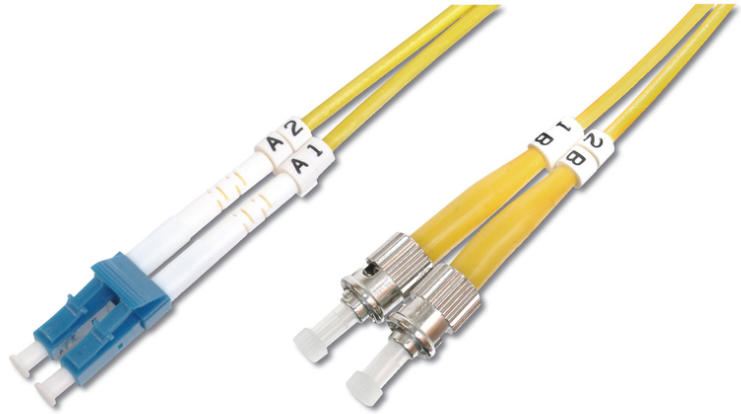


DIGITUS Cavo patch LWL monomodale, LC/ST

DK-2931-10
EAN 4016032249382



Cavo patch in fibra ottica, duplex, da LC a ST SM OS2 09/125 μ, 10 m

Cavo patch in fibra ottica, duplex, da LC a ST, SM OS2 09/125 μ, 10 m

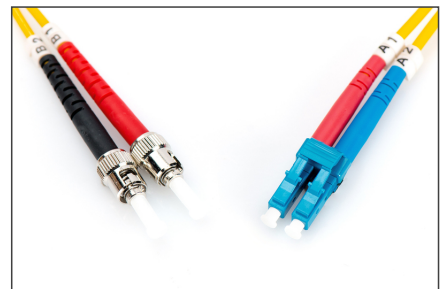
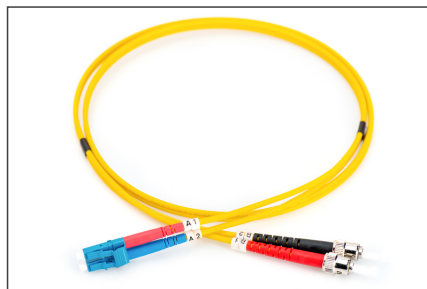
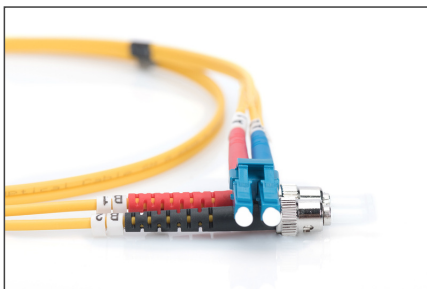
Le migliori prestazioni e qualità della connessione per la vostra rete.

- Cavo Duplex
- LSOH
- Spina con giunto in ceramica
- Diametro del cavo 2 mm
- Confezionate singolarmente con certificato di collaudo
- Assortimento: Cavi patch in fibra ottica

- Classe fibra: OS2
- Colore cavo: giallo
- Connettore 1: LC
- Connettore 2: ST
- Diametro del cavo: 2 mm
- Diametro della fibra: 9/125μ
- Imballaggio: Busta in plastica DIGITUS
- Modalità: Monomodale
- Protezione: monocolore
- Tipo di cavo: I-VH 2E9/125μ
- Lunghezza: 10 m

Logistics						
	Number (pcs)	Weight (kg)	Depth (cm)	Width (cm)	Height (cm)	cm ³
Packaging Unit Carton	40	3.50	45.00	30.00	35.00	47,250.00
Packaging Unit Inside	7	0.61	20.00	28.00	13.00	7,280.00
Packaging Unit Single	1	0.09	20.00	20.00	1.00	400.00
Net single without Packaging	1	0.00	0.00	0.00	0.00	0.00

More images:



Part No.	DK-2931-10			
Lenght	10 m			
Cable Type	Duplex SM 9/125		OS2 LSZH	
	END A		END B	
Connector Type	LC		ST	
Insertion Loss (dB)	0.07	0.08	0.08	0.05
Return Loss (dB)	50.5	52.4	55.0	52.3
Q.C.	PASS			