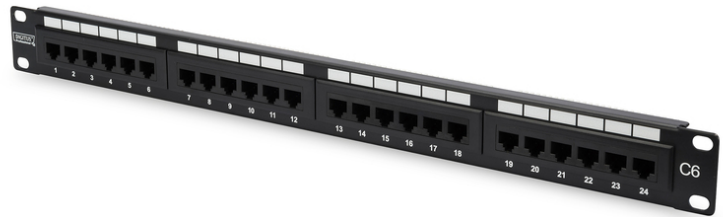


DIGITUS DIGITUS CAT 6, Class E патч-панель

DN-91624U
EAN 4016032241553



CAT 6 Patch Panel, unshielded, 24-port RJ45, 8P8C, LSA, 1U, rack mount, bl, 482x44x109

The unshielded CAT 6 Patch Panel from DIGITUS® is available as 16- or 24-port (1 Hight unit) or 48-port version (2 Hight units). It is manufactured acc. to Link Performance Class E, for up to 250 MHz, EN 50173 and ISO/IEC 11801. It is UL certified. The housing is made of 1.5 mm galvanized cold-rolled steel is therefore perfectly suitable for 19" rack mounting.

Отличная производительность и качество связи для Вашей сети.

- Общие свойства:

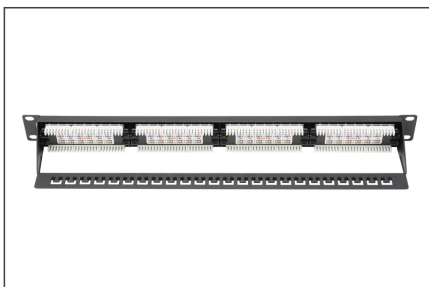
- Подключение кабеля посредством зажимов LSA, цветовая кодировка в соответствии с EIA/TIA 568 A & B
- Механические свойства
- Перекрытие экрана 360°
- Механические свойства
- Физическое описание
- Физическое описание

Attributes

- Color: black, RAL 9005
- Ports: 24
- Units: 1
- Category: CAT 6

Logistics						
	Number (pcs)	Weight (kg)	Depth (cm)	Width (cm)	Height (cm)	cm³
Packaging Unit Carton	10	6.46	52.00	23.50	31.00	37,882.00
Packaging Unit Inside	1	0.65	8.00	56.00	10.00	4,480.00
Packaging Unit Single	1	0.65	8.00	56.00	10.00	4,480.00
Net single without Packaging	1	0.51	3.00	48.50	4.50	1,957.50

More images:



Safety notes

- Protect product from moisture
- Avoid antistatic charging when installing the product
- Observe the specifications of the raw cable manufacturer during installation

EU responsible person

EU based economic operator ensuring the product complies with the required regulations.

ASSMANN Electronic GmbH
Auf dem Schüffel 3
Lüdenscheid, Germany
<https://www.assmann.com>
info@assmann.com