

DIGITUS Tomada de parede DIGITUS CAT6, Classe E, revestida, montagem de superfície

DN-9006-N
EAN 4016032175735



CAT 6 wall outlet, shielded, 2x RJ45 8P8C, LSA, pure white, surface mount

The shielded CAT 6 network outlets from DIGITUS® are certificated to CAT 6 EIA/TIA 568 and ISO/IEC 11801, EN 50173. The cable installation takesplace via LSA strips, color coded acc. EIA/TIA 568 B with horizontal cable entry. All network outlets from DIGITUS® are available flush mount or surface mount.

Melhor desempenho e melhor qualidade de ligação com a rede.

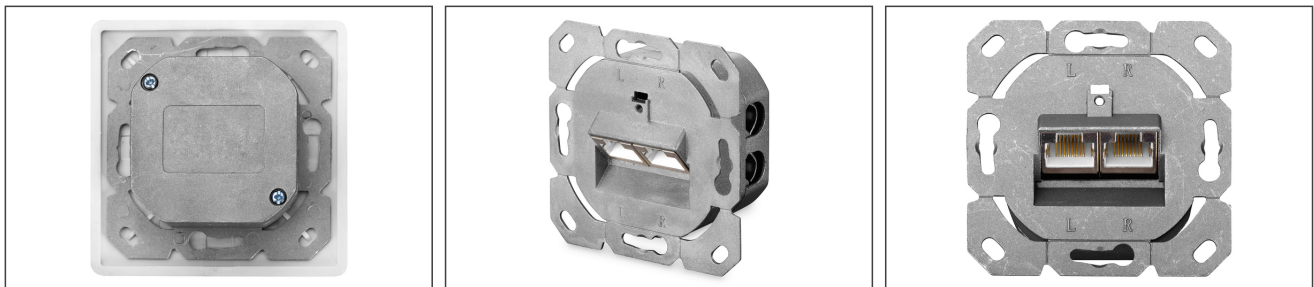
- Características gerais:
- Instalação de cabo via réguas LSA, codificação de cor de acordo com EIA/TIA 568 A & B
- Instalação integrada de protecção de cabo
- Cor: Branco RAL9003

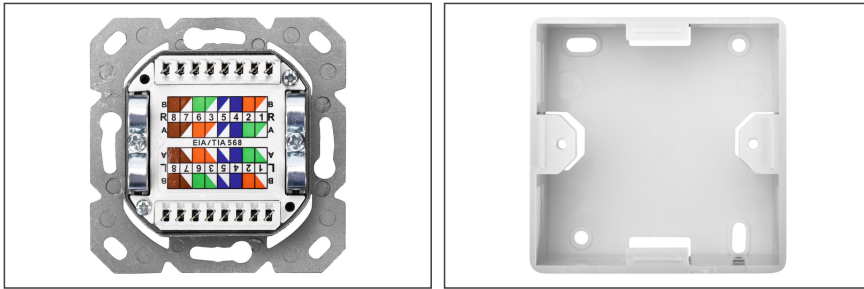
Package contents

- Tomada
- Instruções de Montagem

Logistics						
	Number (pcs)	Weight (kg)	Depth (cm)	Width (cm)	Height (cm)	cm ³
Packaging Unit Carton	60	15.56	45.50	36.00	21.00	34,398.00
Packaging Unit Inside	1	0.26	5.50	9.00	11.80	584.10
Packaging Unit Single	1	0.26	5.50	9.00	11.80	584.10
Net single without Packaging	1	0.18	5.00	8.00	8.00	288.00

More images:



**Safety notes**

- Protect product from moisture
- Avoid antistatic charging when installing the product
- Observe the specifications of the raw cable manufacturer during installation

EU responsible person

EU based economic operator ensuring the product complies with the required regulations.

ASSMANN Electronic GmbH
Auf dem Schüffel 3
Lüdenscheid, Germany
<https://www.assmann.com>
info@assmann.com