

# DIGITUS Tomada de parede DIGITUS CAT5e, Classe D, Tomada de parede, montagem de encaixe

DN-9001-N  
EAN 4016032175650



**CAT 5e wall outlet, shielded, 2x RJ45 8P8C, LSA, color pure white, flush mount**

The shielded CAT 5e network outlets from DIGITUS® are certificated to CAT 5e EIA/TIA 568 and ISO/IEC 11801, EN 50173. The cable installation takes place via LSA strips, color coded acc. EIA/TIA 568 B with horizontal cable entry. All network outlets from DIGITUS® are available flush mount or surface mount.

**Formato totalmente compatível**

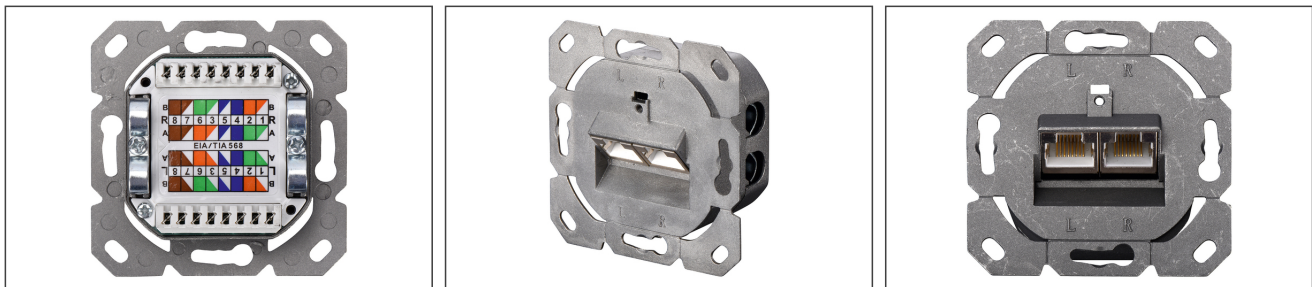
- Características gerais:
- Instalação de cabo via régulas LSA, codificação de cor de acordo com EIA/TIA 568 A & B
- Instalação integrada de protecção de cabo
- Cor: Branco RAL9003

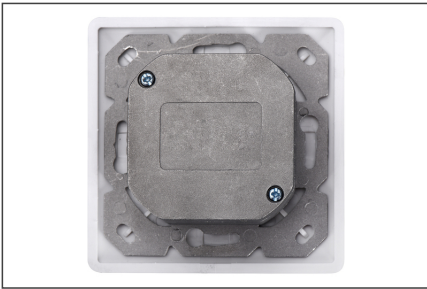
**Package contents**

- Tomada
- Instruções de Montagem

Logistics						
	Number (pcs)	Weight (kg)	Depth (cm)	Width (cm)	Height (cm)	cm <sup>3</sup>
Packaging Unit Carton	60	11.40	45.00	38.00	20.00	34,200.00
Packaging Unit Inside	1	0.19	5.50	9.00	12.00	594.00
Packaging Unit Single	1	0.19	5.50	9.00	12.00	594.00
Net single without Packaging	1	0.15	4.00	8.00	8.00	256.00

**More images:**



**Safety notes**

- Protect product from moisture
- Avoid antistatic charging when installing the product
- Observe the specifications of the raw cable manufacturer during installation

**EU responsible person**

EU based economic operator ensuring the product complies with the required regulations.

ASSMANN Electronic GmbH  
Auf dem Schüffel 3  
Lüdenscheid, Germany  
<https://www.assmann.com>  
[info@assmann.com](mailto:info@assmann.com)