

The DIGITUS logo is presented in a white, trapezoidal frame with a double-line border. The word "DIGITUS" is written in a bold, sans-serif font, with a registered trademark symbol (®) to its upper right. The background of the entire advertisement features a blue-toned server room with two open racks of equipment on the left, and a stack of various network switches and patch panels on the right. A close-up of blue Ethernet cables plugged into a switch is visible in the lower-left foreground. The background is overlaid with a pattern of concentric, glowing blue circles that create a sense of depth and connectivity.

**DIGITUS<sup>®</sup>**

# Data network technology

Solutions for structured cabling

POWERFUL IT INFRASTRUCTURE

## FOR INTELLIGENT NETWORKED WORKING ENVIRONMENTS

ASSMANN Electronic GmbH, based in Lüdenscheid, North Rhine-Westphalia, was founded in 1969 and today - as part of the ASSMANN Holding GmbH - an internationally operating solution provider for high-quality server, network and peripheral infrastructure products. Ten other subsidiaries are united under the umbrella of the holding company with locations in:

**Austria, Switzerland, France, Spain, Croatia, Poland, Turkey, China, Taiwan and Hong Kong.**

The diverse product portfolio of the established DIGITUS own brand is sold worldwide via IT distributors, system integrators, electrical wholesalers, the eCommerce channel and corporate resellers.



### DIGITUS® by ASSMANN

Whether in the public sector, industry, large corporations or individual offices - with the DIGITUS range, ASSMANN offers its customers structured building

cabling and enables them to network modern working environments smartly. This includes products and solutions for:

- Data network technology
- Network and server cabinets
- Installation cables and accessories
- Active and passive network components

### Digital expertise – ASSMANN

Customers benefit not only from the comprehensive, certified and compatible product range, with which they can cover all requirements, but in particular from the many innovative digital services, e-tools and trade marketing measures that ASSMANN offers them tailored to optimise their joint online business.

These include target group-specific customisable product finders for online shops that can be implemented on the customer website, clever direct shop integrations of the DIGITUS brand world and practical article master data downloads such as ETIM.

With the multi-layered product expert know-how of its ASSMANN continues to drive its sustainable growth at an international level.



DIGITUS®  
**TABLE OF CONTENTS**



**COPPER NETWORK TECHNOLOGY 4**

Top-hat rail solution . . . . .	4
Modular data solution . . . . .	4
Housing . . . . .	5
Patch cable . . . . .	5
Installation cable . . . . .	6
Keystone modules . . . . .	7



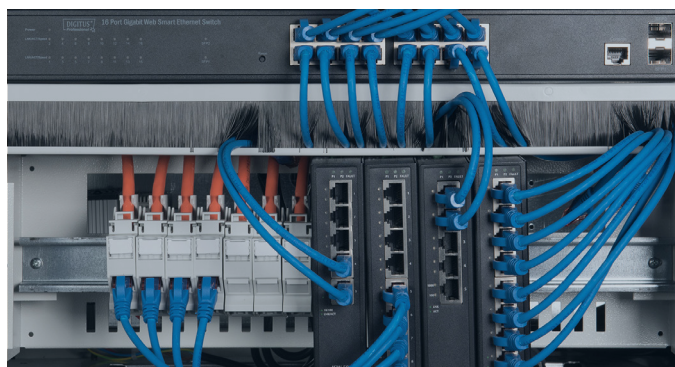
**FIBER OPTIC TECHNOLOGY 8**

FTTH connection box . . . . .	8
LWL Distributor . . . . .	9
LWL Network cable . . . . .	10
LWL Accessories . . . . .	10



**IT-INFRASTRUKTURE 14**

Wall cabinet. . . . .	14
Network cabinet Varioflex-N . . . . .	15
Network cabinet Unique . . . . .	18
Server cabinet Unique . . . . .	23
Accessories . . . . .	26



**NETWORK INFRASTRUCTURE 30**

Industrial switches . . . . .	30
PoE Overvoltage protection . . . . .	35
10 Zoll Switches . . . . .	36
19 Zoll Switches . . . . .	38

## DIN RAIL MOUNTING, MODULAR DATA OUTLET, CONSOLIDATION POINT BOX



Fig. 1



Fig. 2 ★



Fig. 3 ★



Fig. 4 ★



Fig. 5



Fig. 6

PRODUCT				
Product No.	Fig.:	Product:	Color:	Type:
AN-25187	1	Adapter for 1x Keystone Jack, IP20	Grey RAL 7035	For DN-93619, DN-93617, DN-93615
<b>AN-25186 ★</b>	2	Adapter for 1x Keystone Jack, IP20	Grey RAL 7035	All Keystone Modules
<b>AN-25185 ★</b>	3	Adapter for 2x Keystone Jack	Silver	All Keystone Modules
<b>AN-25184 ★</b>	4	Adapter for 1x Keystone Jack		
DN-93706	5	Patch Panel, STP, 12-Port	Grey RAL 7035	All Keystone Modules
DN-93714	-	Patch Panel, STP, 4-Port	Grey RAL 7035	All Keystone Modules
DN-93716	-	Patch Panel, STP, 6-Port	Grey RAL 7035	All Keystone Modules
DN-93718	-	Patch Panel, STP, 8-Port	Grey RAL 7035	All Keystone Modules
AN-25188	6	DIN-Rail Mounting Kit for Desktop Patch Panel	Silver	All Desktop Patch Panels



Fig. 1 ★



Fig. 2 ★



Fig. 3



Fig. 4



Fig. 5



Fig. 6



Fig. 7 ★



Fig. 8 ★



Fig. 9 ★



Fig. 10



Fig. 11



Fig. 12



Fig. 13

PRODUCT						
Product No.	Fig.:	Product:	Design:	Color:	Type:	Suitable for:
<b>DN-93831 ★</b>	1	Face Plate, 1/2 Port, 50x50 mm, 80x80 mm	GER	Pure White	1/2x Port design compatible	Cavity socket, flush mount, trunking, surface mount box
<b>DN-93831-1 ★</b>	2	Face Plate, 1/2 Port	GER	Silver	2x Port design compatible	Cavity socket, trunking, surface mount box
DN-93821	3	Face Plate, 3 Port, 50x50 mm, 80x80 mm	GER	Pure White	3x Port	Cavity socket, trunking, surface mount box
DN-93801-1	4	Face Plate, 2 Port, 50x50 mm, 80x80 mm	GER	Pure White	2x Port	Cavity socket, trunking, surface mount box
DN-93811	5	Face Plate, 1 Port, 50x50 mm, 80x80 mm	GER	Pure White	1x Port	Cavity socket, trunking, surface mount box
DN-93803	6	Surface mount box for face plates, 80x80 mm	GER	Pure White	-	-
<b>DN-93802 ★</b>	7	Face Plate, 2 Port, 80x80 mm	FR	White	2x Port	45x45 Standard
<b>DN-93802-1-SH ★</b>	8	Face Plate, 1 Port, 22.5x45 mm	FR	White	1x Port	Directly mount in trunking, 45x45 Standard
<b>DN-93802-3-SH ★</b>	9	Face Plate, 1 Port, 45x45 mm	FR	White	1x Port	Directly mount in trunking, 45x45 Standard
DN-93802-5-SH	10	Frame for face plates, 80x80 mm	FR	White	-	-
DN-93802-6-SH	11	Face Plate, Angled, 1 Port, 45x45 mm	FR	White	1x Port	Directly mount in trunking/floor boxes, 45x45 Standard
DN-93802-7-SH	12	Face Plate, Angled, 2 Port, 45x45 mm	FR	White	2x Port	Directly mount in trunking/floor boxes, 45x45 Standard
DN-93804	13	Surface mount box for face plates, 80x80 mm	FR	Pure White	-	Directly mount in trunking/floor boxes, 45x45 Standard

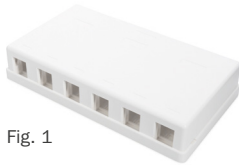


Fig. 1



Fig. 2



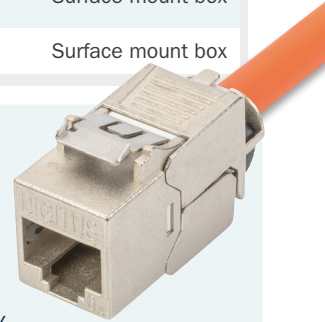
Fig. 3 ★

PRODUCT				
Product No.	Fig.:	Product:	Type:	Characteristics:
DN-93705	1	Consolidation Point Box, Plastic	6-Port	Surface mount box
AT-AG 302A-WH	2		2-Port	
<b>DN-93708</b> ★	3	Consolidation Point Box, Metal	4-Port	Surface mount box

### PATCH PANEL WITH HIGH DENSITY (DN-91424) – 48 PORTS IN ONE HEIGHT UNIT

This Patch Panel is an efficient way to increase the port density in the cabinets and can be obtained without Keystone Modules for personal assembling. It can be used universally in all 483 mm (19") distribution cabinets. The matching Keystone Jacks from DIGITUS® are available individually or in practical 24-packaging units.

MATCHING THE PATCH PANEL:  
KEYSTONE JACK  
DN-93619-24



### DIGITUS® PATCH CABLE



Fig. 1



Fig. 2



Fig. 3



Fig. 4



Fig. 5



Fig. 6

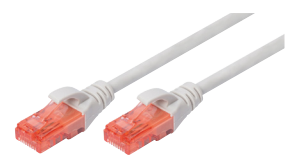


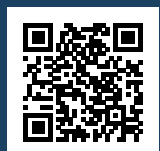
Fig. 7

PRODUCT				
Product No.	Fig.:	Product:	Type:	Characteristics:
DK-1844-xxx	1	CAT 8.1 S/FTP, AWG 24/7	Available in different lengths	8.1 40 GBit LSZH
DK-1644-A-xxx	2	CAT 6 <sub>A</sub> S/FTP, AWG 26/7	Available in different lengths and colours	6 <sub>A</sub> 10 GBit LSZH
DK-1643-A-xxx	3	CAT 6 <sub>A</sub> S/FTP, AWG 27/7 UC 900, TM31	Available in different lengths and colours	6 <sub>A</sub> 10 GBit LSZH
DK-1613-A-xxx	4	CAT 6 <sub>A</sub> U/UTP, AWG 26/7	Available in different lengths and colours	6 <sub>A</sub> 10 GBit LSZH
DK-1644-xxx	5	CAT 6 S/FTP, AWG 26/7	Available in different lengths and colours	6 1 GBit LSZH
DK-1644-XXX/BL-OD	6	CAT 6 S/FTP, AWG 27/7, PE	Available in different lengths and colours	6 1 GBit PE
DK-1617-xxx	7	CAT 6 U/UTP, AWG 26/7	Available in different lengths and colours	6 1 GBit LSZH

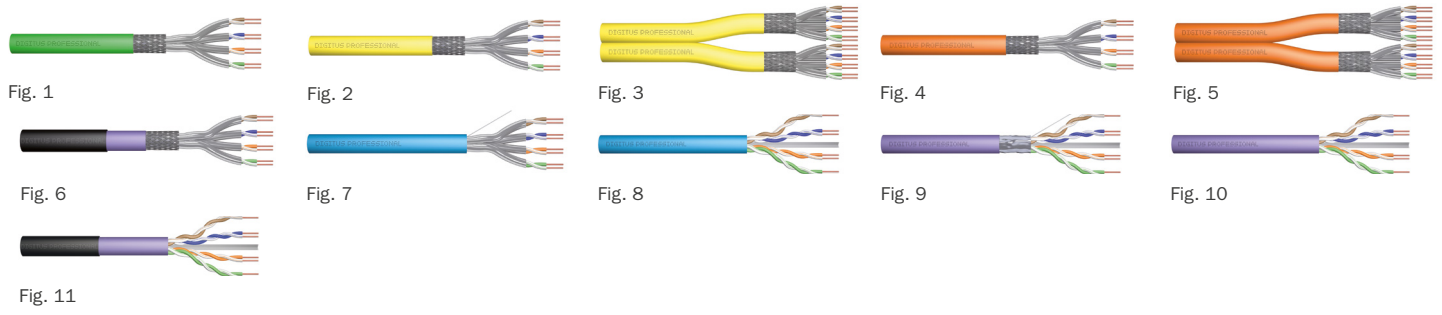


## SEE HOW IT WORKS!

We show and explain our products and their functionality to you!  
Simply scan the QR code or visit our YouTube channel!



DIGITUS®  
**INSTALLATION CABLE AND KEYSTONE MODULE**

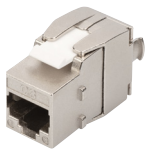


PRODUCT							
Product No.	Length:	Fig.:	Product:	Color:	Type:	Characteristics:	
DK-1843-A-VH-5	500 m	1	CAT 8.II S/FTP, 2000 MHz, AWG 22/1	Green	Simplex	8.2	D <sub>ca</sub> LSZH 40 GBit
<b>DK-1743-A-VH-10</b> ★	1000 m	2	CAT 7 <sub>A</sub> S/FTP, 1500 MHz, AWG 22/1	Yellow	Simplex	7 <sub>A</sub>	D <sub>ca</sub> LSZH 10 GBit
DK-1743-A-VH-D-5	500 m	3					
DK-1743-A-VH-5	500 m	2	Cat.7 <sub>A</sub> S/FTP, installation cable Dca-s1a d1 a1	Yellow	Simplex	7 <sub>A</sub>	D <sub>ca</sub> LSZH 10 GBit
DK-1744-A-VH-10-P	1000 m	2	CAT 7 <sub>A</sub> S/FTP, 1500 MHz, AWG 22/1	Yellow	Simplex	7 <sub>A</sub>	C <sub>ca</sub> LSZH 10 GBit PVP
DK-1744-A-VH-D-5-P	500 m	3					
<b>DK-1743-VH-10</b> ★	1000 m	4	CAT 7 S/FTP, 1200 MHz, AWG 23/1	Orange	Simplex	7	D <sub>ca</sub> LSZH 10 GBit
DK-1743-VH-5★	500 m						
DK-1743-VH-1★	100 m						
DK-1743-A-VH-5-LD	500 m	2	DIGITUS CAT 7A S/FTP, Dca-s1a d1 a1	Yellow	Simplex	7	D <sub>ca</sub> LSZH 10 GBit
DK-1743-VH-D-5★	500 m	5	CAT 7 S/FTP, 1200 MHz, AWG 23/1	Orange	Duplex	7	D <sub>ca</sub> LSZH 10 GBit
DK-1743-VH-D-1★	100 m						
DK-1743-VH-250	250m	4	CAT 7 S/FTP, 1200 MHz, AWG 23/1	Orange	Simplex	7	D <sub>ca</sub> LSZH 10 GBit
DK-1743-VH-050	50 m						
DK-1743-VH-025	25 m						
DK-1744-VH-10★	1000 m	4	CAT 7 S/FTP, 1200 MHz, AWG 23/1	Orange	Simplex	7	C <sub>ca</sub> LSZH 10 GBit
DK-1744-VH-5	500 m						
DK-1745-VH-10	1000 m	4	CAT 7 S/FTP, 1200 MHz, AWG 23/1	Orange	Simplex	7	B <sub>2ca</sub> LSZH 10 GBit
DK-1745-VH-5	500 m						
DK-1745-VH-1	100 m						
<b>DK-1741-VH-10-OD</b> ★	1000 m	6	CAT 7 S/FTP, 1200 MHz, AWG 23/1, PE	Black & Violett	Simplex	7	E <sub>ca</sub> LSZH 10 GBit
DK-1741-VH-1-OD	100 m						
DK-1623-A-VH-5★	500 m	7	CAT 6 <sub>A</sub> U/FTP, 500 MHz, AWG 23/1	Blue	Simplex	6 <sub>A</sub>	E <sub>ca</sub> LSZH 10 GBit
<b>DK-1623-A-VH-305</b>	305 m						
DK-1623-A-VH-1	100 m						
DK-1625-A-VH-5	500 m	7	CAT 6 <sub>A</sub> U/FTP, 500 MHz, AWG 23/1	Blue	Simplex	6 <sub>A</sub>	C <sub>ca</sub> LSZH 10 GBit
<b>DK-1613-A-VH-5</b> ★	500 m	8	CAT 6 <sub>A</sub> U/UTP, 500 MHz, AWG 23/1	Blue	Simplex	6 <sub>A</sub>	E <sub>ca</sub> LSZH 10 GBit
DK-1613-A-VH-305	305 m						
DK-1614-A-VH-5	500 m	8	CAT 6 <sub>A</sub> U/UTP, 500 MHz, AWG 23/1	Blue	Simplex	6 <sub>A</sub>	D <sub>ca</sub> LSZH 10 GBit
DK-1614-A-VH-305	305 m						
DK-1615-A-VH-5	500 m	8	CAT 6 <sub>A</sub> U/UTP, 500 MHz, AWG 23/1	Blue	Simplex	6 <sub>A</sub>	C <sub>ca</sub> LSZH 10 GBit

**LEGEND:**

<b>CATEGORY</b>	<b>IP-CLASS</b>	<b>GBIT ETHERNET</b>	<b>FIRE RESISTANCE CLASS</b>	<b>DESIGN COMPATIBLE</b>	<b>CERTIFIED</b>	<b>TOPSELLER</b>
6 6 <sub>A</sub> 7 7 <sub>A</sub> 8.2	IP 67	1 GBit 10 GBit 40 GBit	E <sub>ca</sub> C <sub>ca</sub> D <sub>ca</sub> B <sub>2ca</sub>		PVP	

Product No.	Length:	Fig.:	Product:	Color:	Type:	Benefits:
DK-1623-VH-5 ★ <b>DK-1623-VH-305</b>	500 m 305 m	9	CAT 6 F/UTP, 250 MHz, AWG 23/1	Purple	Simplex	6 E <sub>ca</sub> LSZH 1 GBit
DK-1625-VH-5	500 m	9	CAT 6 F/UTP, 250 MHz, AWG 23/1	Purple	Simplex	6 C <sub>ca</sub> LSZH 1 GBit
DK-1613-VH-5 <b>DK-1613-VH-305</b> ★ DK-1613-VH-1	500 m 305 m 100 m	10	CAT 6 U/UTP, 250 MHz, AWG 23/1	Purple	Simplex	6 E <sub>ca</sub> LSZH 1 GBit
DK-1614-VH-5 <b>DK-1614-VH-305</b> ★	500 m 305 m	10	CAT 6 U/UTP, 250 MHz, AWG 23/1	Purple	Simplex	6 D <sub>ca</sub> LSZH 1 GBit
DK-1615-VH-5 DK-1615-VH-305	500 m 305 m	10	CAT 6 U/UTP, 250 MHz, AWG 23/1	Purple	Simplex	6 C <sub>ca</sub> LSZH 1 GBit
DK-1616-VH-5 DK-1616-VH-305	500 m 305 m	10	CAT 6 U/UTP, 250 MHz, AWG 23/1	Purple	Simplex	6 B <sub>2ca</sub> LSZH 1 GBit
DK-1613-VH-5-OD	500 m	11	CAT 6 U/UTP, 250 MHz, AWG 23/1, PE	Black & Purple	Simplex	6 E <sub>ca</sub> LSZH 1 GBit



PRODUCT	
Product No.	<b>DN-93816</b>
Pcs.:	1
Product:	CAT 8.1 Keystone Jack, STP, 2000 MHz
Type:	Tool free installation
Benefits:	8.1 40 GBit
Strain relief:	Cable tie



PRODUCT	
Product No.	<b>DN-93619-24</b>
Pcs.:	24
Product:	CAT 6 <sub>A</sub> Keystone Jack, STP, 500 MHz
Type:	Tool free installation
Benefits:	6 <sub>A</sub> 10 GBit
Strain relief:	Smart cable manager



PRODUCT	
Product No.	<b>DN-93617-24</b> ★
Pcs.:	24
Product:	CAT 6 <sub>A</sub> Keystone Jack, STP, 500 MHz
Type:	Tool free installation
Benefits:	DN-93617 ★
Strain relief:	Smart cable manager



PRODUCT	
Product No.	<b>DN-93615-24</b> ★
Pcs.:	24
Product:	CAT 6 <sub>A</sub> Keystone Jack, STP, 500 MHz
Type:	Tool free installation
Benefits:	DN-93615 ★
Strain relief:	Cable tie

LWL  
**NETWORK OUTLET**

**DIGITUS® FTTX enclosure, empty for 4 x SC SX, LC DX couplers**

**FTTX enclosure, empty for 4x SC SX, LC DX surface and DIN-rail mount**

**FTTX housing for fiber splices, terminations, storage and connections in a compact protective housing**



Technical details

- Suitable for 4 ports: 4 x SC SX / 4 x LC DX (without flange)
- Integrated splice cassette
- Protection class: IP45
- Mounting: Wall or top-hat rail (DIN rail)
- Suitable for singlemode and multimode fibre optic cables
- Operating temperature: -40°C ~ +85°C

**DN-931093** | EAN: 4016032466529 | FTTX enclosure, empty for 4 x SC SX, LC DX couplers

**DIGITUS® Wall Outlet (FTTH) for 2x SC Simplex/LC Duplex**

**Wall Outlet (FTTH) for 2x SC Simplex, LC Duplex 2x splice holder, 19x86x86mm, grey (RAL 7035)**

**DIGITUS® Optical Termination Boxes are made for high demand IT-Infrastructure Solutions - designed and developed on highest standards.**



Technical details

- Compact & ergonomic design
- Allows cable entry from both sides
- Removable cover for easy access
- Wall mounting
- Dimensions (HxWxD): 19x86x86 mm
- Cable ports: 4 cable ports (for cables with max. 5 mm diameter)
- Capacity: 2 splices

**DN-931087** | EAN: 4016032368045 | Wall Outlet (FTTH) for 2x SC Simplex/LC Duplex

**DIGITUS Fttx Installation Kit, Pre-assembled, 4-Core, LC/APC connector, 30 m**

**Fttx - Installation Kit, 4-Core, LC connector 30 m, APC, NE4**

**The compact FTTH kit with preassembled fiber optic laying cable on one side is ideal for the installation of high-speed fiber optic connections within the house for the designated network level 4. The fiber optic laying cable is contained in a roll of car**



Technical details

- Junction box for FTTH applications
- 2x LC-APC duplex fibre optic coupler with shutter
- The shutter of the coupler protects against laser and dust
- Adapter type : LC/APC Duplex
- Dimensions (H\*W\*D) : 100 \* 80 \* 30 mm
- Colour : White

**DN-948030** | EAN: 4016032487098 | FTTX Installation Kit, Pre-assembled, 4-Core, LC/APC connector, 30 m

**DN-948050** | EAN: 4016032487098 | FTTX Installation Kit, Pre-assembled, 4-Core, LC/APC connector, 50m

**DN-948070** | EAN: 4016032487098 | FTTX Installation Kit, Pre-assembled, 4-Core, LC/APC connector, 70m



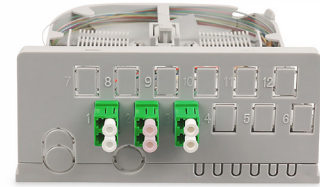
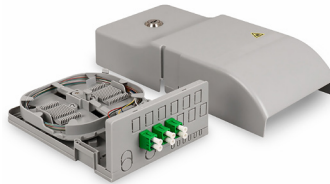
LWL

## DISTRIBUTOR/HOUSING

### DIGITUS FTTHHome Distribution Unit, 3 x LC/APC duplex

**FTTH Home Distribution Unit, 3 x LC/APC Duplex OS2, IP54,  
Splice ready**

**It offers a wide range of functions which is needed in your FttH  
broadband project in a compact and smart design.**



Technical details

- Extremely compact / variable HÜP
- Multifunctional base plate
- Various cable entry options
- Three flexible head holders with splice holders for crimp splice protection
- Patch cable feed protected by long cover
- PLC splitter holder
- Lockable via sealable built-in lock
- Bending radius-optimised "stressless" fibre guide
- Suitable for wall mounting
- Pigtaills: mounted, separated, colour-coded in accordance with IEC 60304 and stored in the cassette

**DN-949103** | EAN: 4016032487630 | FTTH Home Distribution Unit, 3 x LC/APC duplex

### DIGITUS® FTTH Micro Splice Box for 12 (24) x Splice Connections with Splice Cassette

**Micro Fiber Enclosure, 12x Fibers, splice tray incl. Splice  
holder for crimp splice protection**

**Micro splice box suitable for holding up to 24 splice  
connections include splice cassette & splice holder**



Technical details

- Suitable for up to 24 splice connections
- Includes two splice holders for 12 splices each
- Suitable for wall mounting
- Cable entries possible 2 x per side or at the rear
- Includes mounting material, cable entry grommets
- & splice holder
- Dimensions: 160 x 110 x 30 mm (L x W x H)
- Weight: 170 g (base plate, splice cassette, cover)
- Colour: RAL 7035 (light grey)

**DN-931092** | EAN: 4016032466222 | FTTH Micro Splice Box for 12 (24) x Splice Connections with Splice Cassette

### DIGITUS® FTTH Outdoor Distribution Box for 6 SC/DX

**Fibre optic distribution box for outdoor use for 6x SC/  
DX adapters, IP65**

**FTTH distribution box for outdoor use IP 65 with a  
holder for 6 SC Duplex**



Technical details

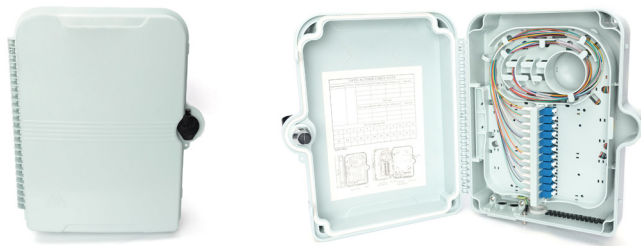
- Holder for 6 SC duplex couplings
- Splice cassette for 12 splices
- lockable
- Cable reserve can be wound up
- 2 cable entries PG 21
- 1 cable entry PG 13.5 mm
- Fastening material
- Splice protection
- IP 65

**DN-968913** | EAN: 4016032371007 | Outdoor Distribution Box for 6 SC/DX

## DIGITUS® FTTH Distribution Box for 16x LC/Duplex or 16x SC/Simplex

FTTH distribution box for 16x SC/SX or 16x LC/DX with key

Lockable FTTH distribution box for outdoor use IP65 for 16x SC Simplex or 16x LC Duplex couplers; dimensions 280x230x110 mm



Technical details

- Holder for 16 SC Simplex or 16 LC Duplex couplings
- Splice cassette for 32 splices
- Cable reserve can be wound up
- 2 cable inputs PG 13.5
- 16 cable outlets 2-5 mm
- Fastening material (DN-91608S)
- Splice protection

**DN-968916** | EAN: 4016032371045 | FTTH Distribution Box for 16x LC/Duplex or 16x SC/Simplex

## DIGITUS® FTTH Outdoor Distribution Box for 24 LC/Duplex, SC/ Simplex couplers

Outdoor FTTH distribution box for 24x SC SX or LC/DX adapters and 24 splices.

An overlength tray for pigtails and various cable inlets ensure the best possible cabling options.



Technical details

- Holder for 24 SC Simplex or 16 LC Duplex couplings
- Splice cassette for 48 splices
- Cable reserve can be wound up
- 2 cable inputs PG 13.5
- 27 cable outlets 2-5 mm

**DN-968911** | EAN: 4016032370987 | FTTH Outdoor Distribution Box for 24 LC/Duplex, SC/ Simplex couplers

LWL

## ACCESSORIES & CABLES

### DIGITUS® FTTH Micro Splice Distributor for 2 x SC SX / 2 x LC DX

Micro Fiber Optic Distribution Box 4x fibers, w/o adapters for 2x SC SX, 2x LC DX

Micro Splice Distributor for 2 x SC Simplex, 2 x LC Duplex Plug Connections



Technical details

- Suitable for 2 x SC Simplex or 2 x LC Duplex connectors / couplings
- Cable entries 2 x per side or rear possible
- Including mounting material, cable entry grommets & splice holder
- Dimensions: 160 x 110 x 30 mm (L x W x H)
- Weight: 179 g (base plate, centre plate, cover)
- Colour: RAL 7035 (light grey)

**DN-931091** | EAN: 4016032466215 | FTTH Micro Splice Distributor for 2 x SC SX / 2 x LC DX

## DIGITUS® colored pigtails, LC/APC OS2 09/125 µ, Simplex

FO pigtail set, 12 pcs., LC (APC), SM OS2 09/125 µ loose buffer, color code DIN IEC 304, 2 m

Future-oriented standards and high-end quality for your network.



### Technical details

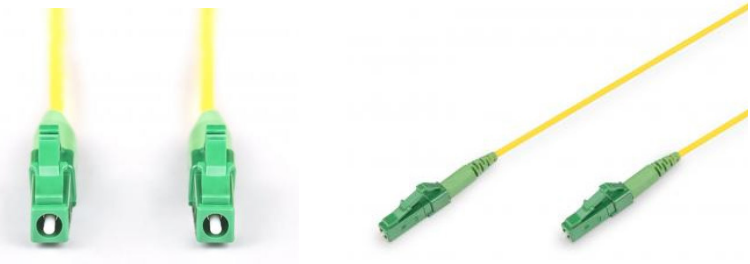
- Simplex OS2 09/125 µ 2 m
- Connector according to standard IEC 61754-4 2002
- Operating temperature: -25 °C ... +80 °C
- Insertion loss MM PC: max. 0.4 dB
- Return loss MM PC: > 25 dB
- Coloured fibre sets according to IEC 304 in the colours: White, violet, turquoise, black, red, pink, orange, grey, green, yellow, brown, blue

DK-29332-02/APC | EAN: 4016032428848 | colored pigtails, LC/APC OS2 09/125 µ, Simplex

## DIGITUS® Fiber Optic simplex patch cable, Singlemode, LC/APC - LC/APC, 1 m

FO patch cord, SM, Simplex, LC/APC to LC/APC G657.A02, 1m

High-quality fibre simplex patch cables offer an excellent connectivity option for indoor and FTTx applications. The longevity of cables is ensured by reliable connector performance



### Technical details

- High flexibility
- Insensitive to bending
- High precision and low insertion loss
- Compliant with G.657.A2

DK-2933-01-APC-SX | EAN: 4016032492825 | Fiber Optic simplex patch cable, Singlemode, LC/APC - LC/APC, 1 m

DK-2933-03-APC-SX | EAN: 4016032492832 | Fiber Optic simplex patch cable, Singlemode, LC/APC - LC/APC, 3 m

DK-2933-05-APC-SX | EAN: 4016032492849 | Fiber Optic simplex patch cable, Singlemode, LC/APC - LC/APC, 5 m

## DIGITUS colored pigtails, LC OS2 09/125 µ, Simplex

LWL Pigtail-Set, 12 Stk., LC, SM OS2 09/125 µ loose buffer, Farbcode DIN IEC 304, 2 m

Zukunftsorientierte Standards und High-End Qualität für Ihr Netzwerk.



### Technical details

- Simplex OS2 09/125 µ 2 m
- Connector according to standard IEC 61754-4 2002
- Operating temperature: -25 °C ... +80 °C
- Transport and storage temperature range: -20 °C ... +65 °C
- Insertion loss MM PC: max. 0.4 dB
- Return loss MM PC: > 25 dB
- Zirconia ceramic ferrule

DK-29332-02 | EAN: 4016032280170 | colored pigtails, LC OS2 09/125 µ, Simplex

## DIGITUS® SC/UPC Fiber Optic Fast connector (10 Pieces)

Fiber Optic Fast Connector, SM SC/UPC 10 piece pack

Fast connectors are designed to enable quick and easy termination of fibers in the field. For uncomplicated fast repair of existing installations as well as for new installations, e.g. for FttX in-house cabling.



Technical details

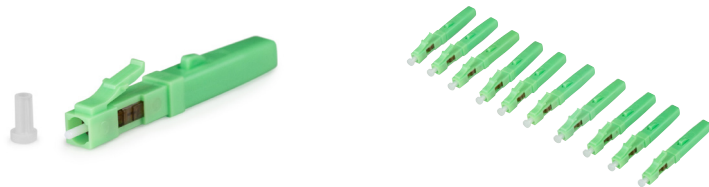
- Plug type: SC
- Cut type: UPC
- Fibre mode: 9/125µm singlemode
- Ferrule: Ceramic (2.5mm)
- Insertion loss ≤0.2dB
- Return loss ≥50dB
- Cable diameter: 0.9/2.0/3.0mm
- Product colour: Black, Blue
- Storage temperature: -40 to 85°C

DN-FC-9100 | EAN: 4016032486800 | SC/UPC Fiber Optic Fast connector (10 Pieces)

## DIGITUS® LC/APC Fiber Optic Fast connector (10 Pieces)

Fiber Optic Fast Connector, SM LC/APC 10 piece pack

Fast connectors are designed to enable quick and easy termination of fibers in the field. For uncomplicated fast repair of existing installations as well as for new installations, e.g. for FttX in-house cabling.



Technical details

- Connector type: LC
- Cut type: APC
- Fibre mode: 9/125µm singlemode
- Ferrule: Ceramic (2.5mm)
- Insertion loss ≤0.2dB
- Return loss ≥50dB
- Cable diameter: 0.9/2.0/3.0mm
- Product colour: Black, Blue
- Storage temperature: -40 to 85°C

DN-FC-9101-APC | EAN: 4016032494638 | LC/APC Fiber Optic Fast connector (10 Pieces)

## DIGITUS® Fiber Optic Splice Box, Equipped, LC, OS2

F0 splice box, 1U, equipped, 12x LC DX, OS2 incl. splice cassette, colored pigtails, couplers



Technical details

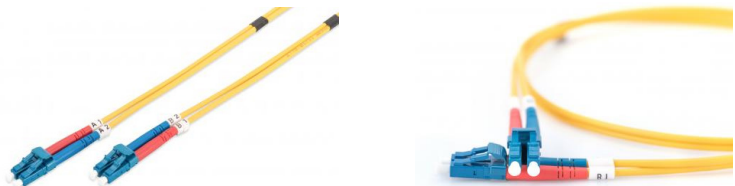
- Completely pre-assembled, fibre pigtails stripped and inserted into the splice cassette(s)
- Coloured pigtails
- Couplers with ceramic sleeves
- Couplers in plastic housing
- Support housing made of 1.0 mm sheet steel, painted
- 1 height unit (44.45 mm)
- 483 mm width (19"), 240 mm depth

DN-96331/9 | EAN: 4016032278450 | Fiber Optic Splice Box, Equipped, LC, OS2

## DIGITUS® Fiber Optic Singlemode Patch Cord, LC/LC

F0 patch cord, duplex, LC to LC SM OS2 09/125 µ, 1 m

Future-oriented standards and high-end quality for your network.



Technical details

- Duplex cable
- LSOH
- Connector with ceramic ferrule
- Cable diameter 3 mm
- Individually packed with measurement protocol
- Connection 1: LC
- Connector 2: LC
- Type: Singlemode
- Colour cable: Yellow

DK-2933-01 | EAN: 4016032248910 | LWL Singlemode Patchkabel, LC / LC

## DIGITUS Fiber Optic Multimode Patchcord, OM4, LC / LC

FO patch cord, duplex, LC to LC MM OM4 50/125 µ, 7 m

Future-oriented standards and high-end quality for your network.



Technical details

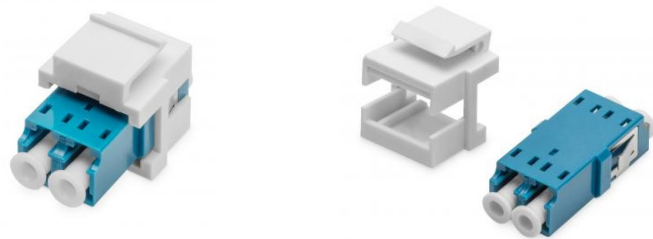
- Duplex cable
- LSOH
- Connector with ceramic ferrule
- Cable diameter 3 mm
- Individually packed with measurement protocol
- Colour: RAL 4003
- Connection 1: LC
- Connector 2: LC
- Type: Multimode

DK-2533-07-4 | EAN: 4016032308836 | Fiber Optic Multimode Patchcord, OM4, LC / LC

## DIGITUS Fiber optic LC/LC duplex coupler, Singlemode, Keystone module

Fiber LC-duplex coupler, SM, for keystone panel OS2, Color blue, incl. keystone frame

The standardized dimensions of adapters makes it suitable for most conventional distributors and wall outlets making it a great solution for bringing fiber to the home and office.



Technical details

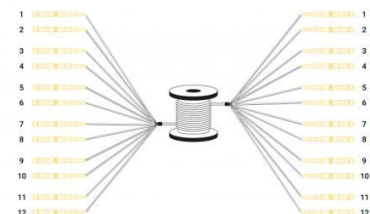
- Robust snap-in construction
- Quick and easy installation
- Suitable for use in various standard sizes of keystone installations
- High accuracy and low insertion loss
- Connector type: LC-LC Duplex
- UPC polished
- Fibre mode: Single mode
- Mounting type: Without flange

DN-96007-1-K | EAN: 4016032489801 | Fiber optic LC/LC duplex coupler, Singlemode, Keystone module

## DIGITUS Pre-assembled Fiberglass Universal Breakout Cable, Single Mode OS2, 12 Fibers, LC/UPC - LC/UPC

Breakout cable 12 Fiber, SM G.657.A1 LC/UPC-LC/UPC, universal, color black, 50m

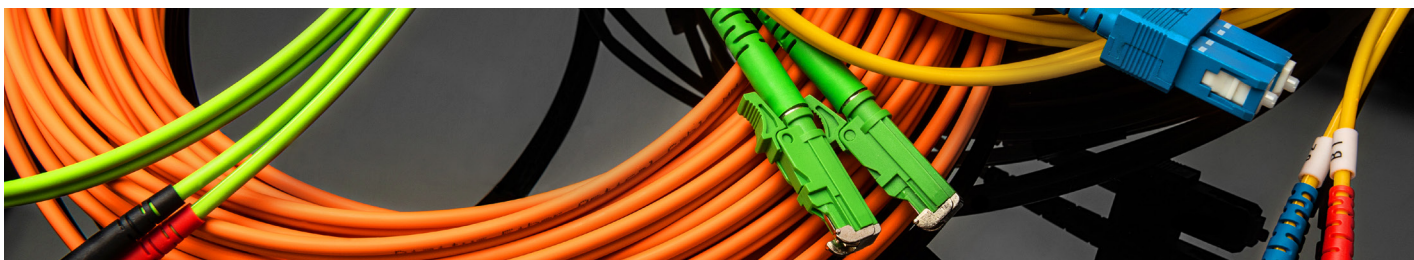
Pre-assembled fiberglass breakout cables enable easy, time-saving and flexible installation of network routes with a high bandwidth.



Technical details

- Pre-assembled
- High-quality connectors assembled ex works
- Standard lengths available from stock
- Ready for immediate use, without additional splicing work
- High-quality components and construction
- Applications Applicable for indoor and outdoor areas
- Connection of network cabinets without potential differences

DK-2A33CU050BK-BBB | EAN: 4016032484073 | Pre-assembled Fiberglass Universal Breakout Cable, Single Mode OS2, 12 Fibers, LC/UPC - LC/UPC



# DIGITUS® IT-INFRASTRUCTURE



<https://at.assmann.shop/en/IT-Infrastructure/>

Learn more:

## DIGITUS® Wall Mounting Cabinet 254 mm (10") - 312x300 mm (WxD)

254 mm (10") 6U wall mounting cabinet 330x312x300 mm, color grey (RAL 7035)

The DIGITUS® Wall Mounting Cabinets are made for high demand IT-Infrastructure Solutions - designed and developed on highest standard in Germany



### Technische Details

- Protection class IP20
- Lockable safety glass door
- 200° door opening angle
- 254 mm (10") profile rails mounted at the front inside the enclosure, galvanised
- 254 mm (10") profile rails are adjustable in depth
- Cable entry with brush strip in the roof and with plastic cover in the base
- Ventilation slots for active and passive ventilation

**DN-10-05U-1** | EAN 4016032331421 | 254 mm (10") 6U wall mounting cabinet 330x312x300 mm, color grey (RAL 7035)

## DIGITUS Network Set - 254 mm (10") - 9U, 312 x 100 mm (W x D)

10 inch network bundle, including 9U cabinet, grey shelf, PDU, 8-port switch, CAT 6 patch panel

Complete set to build up a compact 254 mm (10") network incl. cabinet, shelf, power strip, switch, patch panel



### Technical details

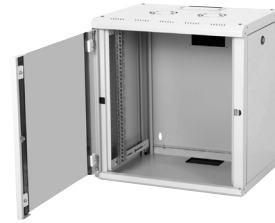
- Including wall-mounted housing, 9U, 464 x 312 x 100 mm (DN-10-09U)
- Including shelf, 1U (DN-10-TRAY-1)
- Including socket strip, 1U, 3x earthing contact (DN-95411) Including Gigabit Ethernet switch, 8-port (DN-80114)
- Including CAT 6, class E, patch panel, 8-port, shielded (DN-91608S)
- Wall-mounted housing dimensions (H x W x D): 464 x 312 x 100 mm
- Multiple socket outlet with 3 earthed sockets 250VAC 50/60Hz / 16A / 1000W
- Socket strip with 2 m supply cable H05VV-F 35 1.5 mm<sup>2</sup> with earthing contact plug
- Switch fulfils the network standards IEEE 802.3, IEEE 802.3u, IEEE 802.3ab and IEEE 802.3x
- Patch panel for applications up to 250 MHz, 1GBase-T
- Cable installation on patch panel via LSA strips, colour-coded in accordance with EIA/TIA 568 A & B

**DN-10-SET-2** | EAN 4016032455370 | 10 inch network bundle, including 9U cabinet, grey shelf, PDU, 8-port switch, CAT 6 patch panel

## DIGITUS® Wall Mounting Cabinet Unique Series - 600x450 mm (WxD)

12U wall mounting cabinet, Unique 643x600x450 mm, color grey (RAL 7035) or black (RAL 9005)

The DIGITUS® Unique Series is made for high demand IT-Infrastructure Solutions - designed and developed on highest standard in Germany



### Technical details

- Lüftungsschlitze für aktive sowie passive Be- und Entlüftung
- Abschließbare Sicherheitsglastür mit Stahlrahmen
- 210° Türöffnungswinkel
- Seitenteile sind abschließ- und abnehmbar
- 483 mm (19")-Profilschienen an der Vorder- und

Rückseite innerhalb des Schrankes montiert, galvanisiert

- 483 mm (19")-Profilschienen sind in der Tiefe verstellbar und mit Markierung der Höheneinheit versehen
- Kabelzuführung an Rückseite und Boden

mit Plastikabdeckung und Oberseite mit verschiebbarer Abdeckung

- Dach ist vorbereitet zur Aufnahme eines Lüfterelements (ausgestanzte Aufnahmen)
- Lüftungsschlitze für aktive sowie passive Be- und Entlüftung

DN-19 12-U | EAN 4016032135227 | 12U wall mounting cabinet, Unique 643x600x450 mm, color grey (RAL 7035) or black (RAL 9005)

## DIGITUS Wall Mounting Cabinets IP55 - Outdoor - 600x450 mm (WxD)

12U wall mounting cabinet, outdoor, IP55  
713x600x450 mm, color grey (RAL 7035)

The DIGITUS® IP55 Outdoor Wall Mounting Cabinets are designed for industrial applications with protection against water and dust acc. to safety class IP55.

### Technische Details

- Protected against dust in damaging quantities and water jets (IP 55)
- Steel front door with lockable swivelling lever handle and 3-point locking system
- Front door with earthing and two welded-on,

reinforcing beams in U-shape and seal

- Freestanding use with separate plinth possible
- Protection class IP 55
- Lockable steel front door with swivelling lever handle

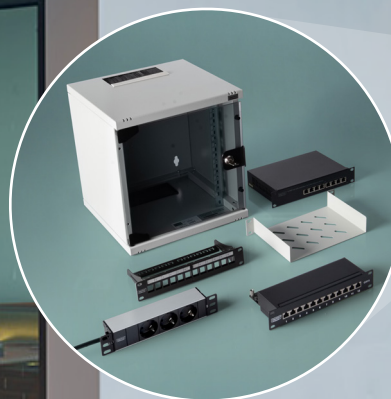
- 140° door opening angle
- 3-point four-point locking of the front door



DN-19 12U-I-OD | EAN 4016032360995 | 12U wall mounting cabinet, outdoor, IP55 713x600x450 mm, color grey (RAL 7035)



Learn more:



<https://at.assmann.shop/en/IT-Infrastructure/Network-Cabinets-Wall-Mounting/>

## Varioflex-N Network enclosures

800 mm width - 800, 1000 mm depth

The Varioflex-N series has been designed and manufactured for the high demands of the IT infra structure. It offers maximum stability and flexibility in a wide range of application scenarios.

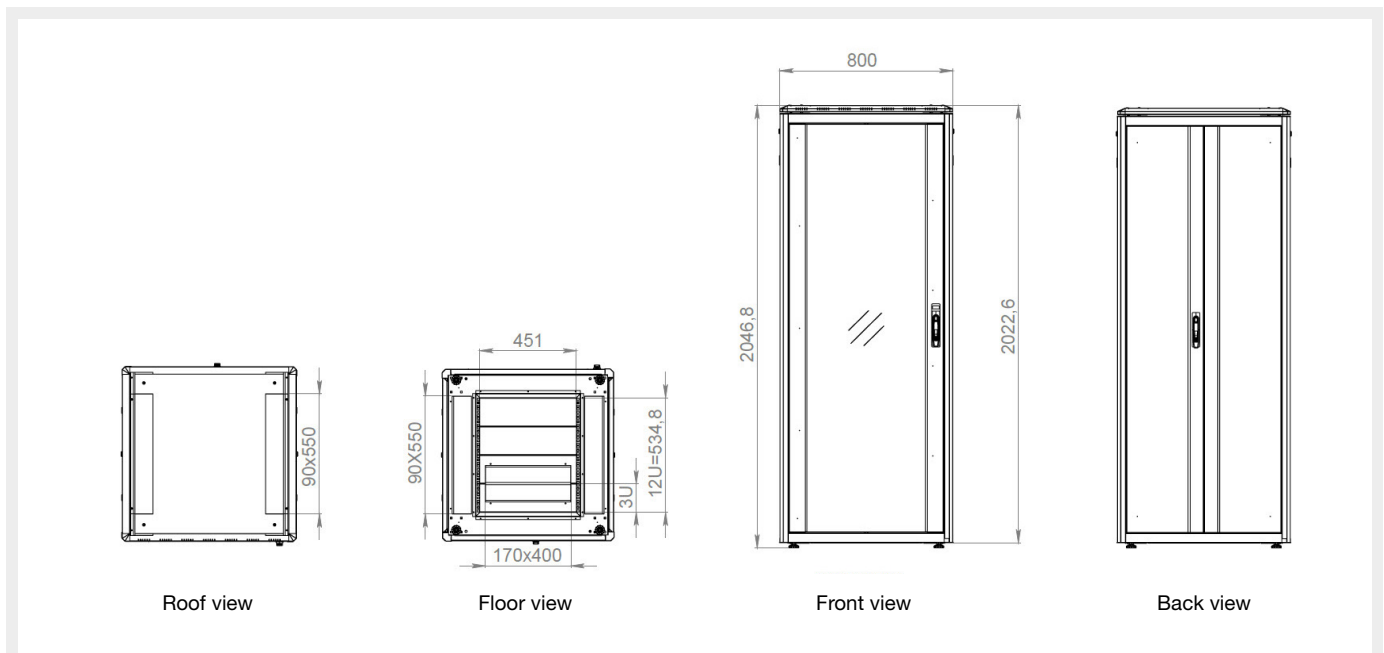


### Main features

- Protection class IP20
- Front door of the network enclosures made of complete metal frame with 4 mm thick tempered glass
- Steel rear door, double folding
- Swing handle with profile half-cylinder lock incl. key on front and rear doors
- 120° door opening angle
- Side panels are lockable and removable
- incl. 4 pcs. levelling feet
- 482.6 mm (19") profiles mounted on the front and rear of the cabinet mounted, galvanized
- 482.6 mm (19") profiles are connected to the main frame by means of depth struts at 4 points each on the left and right side
- 482.6 mm (19") profiles are adjustable in depth and with marking of the height unit
- Load capacity of the 482.6 mm (19") profile rails: 1.200 kg
- Generously dimensioned vertical cable channels with cable routing and cover built into the front
- Installation depth for components min.-max.:  
290 - 570 mm (800 mm depth cabinets);  
290 - 770 mm (1000 mm depth cabinets)
- Roof is prepared to accommodate a fan unit and an attached, removable cover
- Modular, openable base chassis with removable blank panels (400 mm width)
- Cable inlets in base and roof with brush strip left and right (70 x 316 mm)
- Standard colour: Grey (RAL 7035), other colors are available on request.
- Various earthing points, earthing cables are pluggable (Faston connector)
- Supplied completely assembled
- Extensive range of accessories available



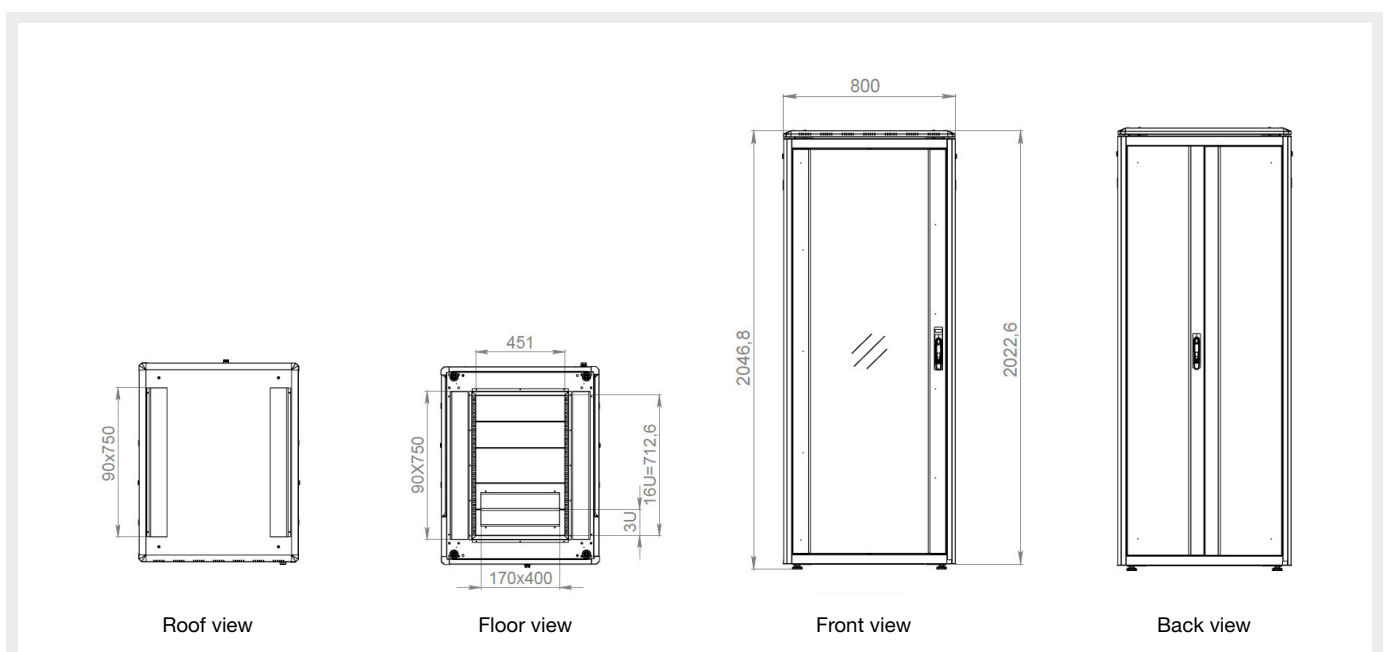
## 482,6 mm (19") Varioflex-N Network cabinet// 800x800 mm (WxD)



### Article number Information Varioflex-N Network cabinet

Art.-Nr.	EAN	HE	Colour	RAL	Height (mm)	Wide (mm)	Depth (mm)	Load capacity (kg)
DN-43000	4016032486916	42	Grey	7035	2022,6	800	800	1.200
DN-43000-B	4016032489924	42	Black	9005	2022,6	800	800	1.200

## 482,6 mm (19") Varioflex-N Network cabinet// 800x1000 mm (WxD)



### Article number Information Varioflex-N Network cabinet

Art.-Nr.	EAN	HE	Colour	RAL	Height (mm)	Wide (mm)	Depth (mm)	Load capacity (kg)
DN-43001	4016032486923	42	Grey	7035	2022,6	800	1.000	1.200
DN-43001-B	4016032489931	42	Black	9005	2022,6	800	1.000	1.200

## Network Cabinet Unique Series

600, 800 mm width - 600, 800, 1.000, 1.200 mm depth

Unique Series network cabinets are designed to meet the demanding requirements of IT infrastructure and cabling. Well thought-out optimizations for cable routing offer the usual high DIGITUS® quality. Each cabinet is designed to be user-friendly and has an aesthetic design.

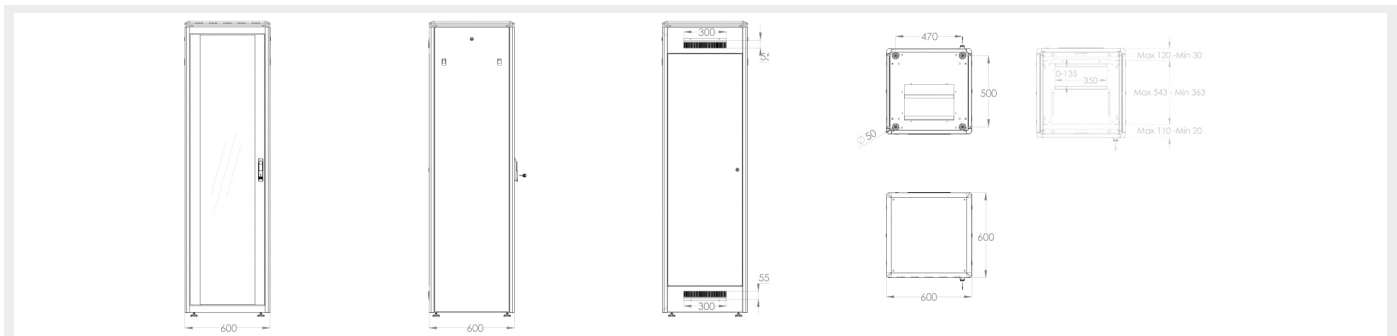
The roof is prepared to accommodate a fan module for active ventilation and equipped with a stepped lid including ventilation slots for improved air circulation.



### Main features

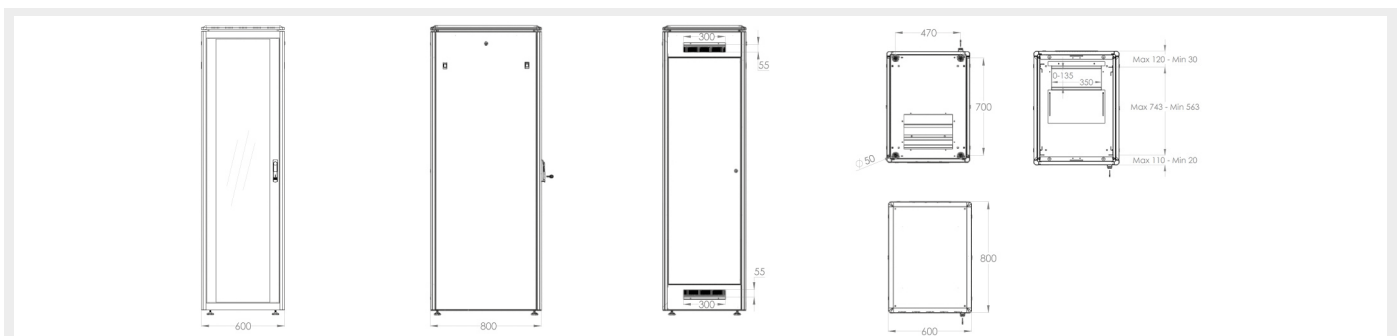
- Safety class rating IP20
- Lateral metal struts front door with safety glass
- Lock system with pivot lever on front door (ready for profile half cylinder; adapter included)
- 120° door opening angle on front- and rear doors
- Double wing opening rear door (800 mm wide cabinets); Single wing opening rear door (600 mm wide cabinets)
- 1-point-locking-mechanism on all doors
- Side panels are lockable and removable
- Incl. 4 pieces of leveling feet already pre-configured under the rack
- 482,6 mm (19") profile rails mounted on the front- and rear side inside of the rack, galvanized
- 482,6 mm (19") profile rails are adjustable in depth and with height unit marking
- Load capacity of the 482,6 mm (19") profile rails: 800 kg
- 1,5 to 2,0 mm strong steel sheet
- High frame stiffness due to special sheet metal bending technology
- Built-in depth braces (for cabinets from 26HE) provide stability
- 800 mm wide cabinets are equipped with vertical cable routing channels at the front
- Slide-on cable inlet with rubber sealing in the bottom
- Cable inlet in the floor and roof with brush list left and right (for cabinets from 800 mm width)
- Cable inlet with brush strip at the top and bottom rear of the cabinet (for cabinets from 26U)
- Roof is prepared for mounting a fan unit
- Various end points in the cabinet for built in components
- Delivery is completely assembled
- Other colours and door variations are available on request

## 482,6 mm (19") Network Cabinet Unique Series // 600x600 mm (WxD)



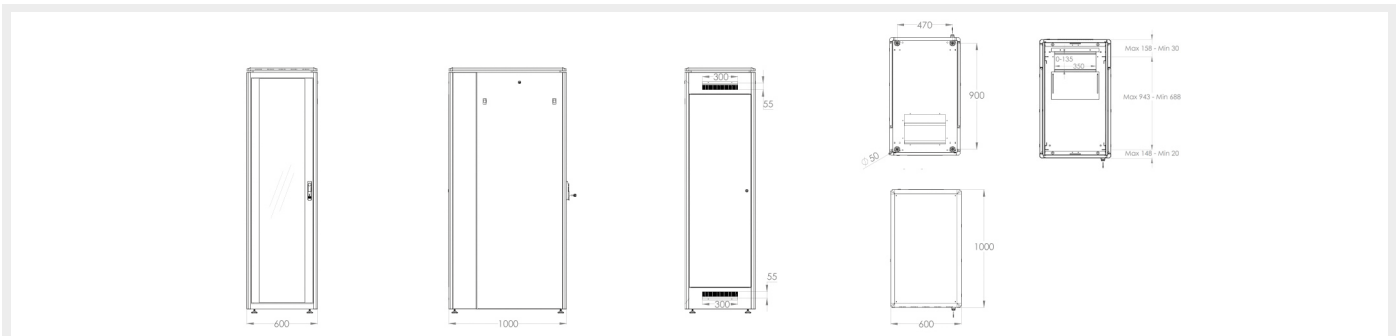
Art.-Nr.	EAN Code	HE	Color	RAL	Height (mm)	Width (mm)	Depth (mm)	Net weight (kg)
DN-19 22U-6/6-1	4016032331100	22	Grey	RAL 7035	1.164	600	600	47,9
DN-19 22U-6/6-B-1	4016032332220		Black	RAL 9005				
DN-19 26U-6/6-1	4016032331131	26	Grey	RAL 7035	1.342			52,7
DN-19 26U-6/6-B-1	4016032343592		Black	RAL 9005				
DN-19 32U-6/6-1	4016032331049	32	Grey	RAL 7035	1.609			60,9
DN-19 32U-6/6-B-1	4016032337959		Black	RAL 9005				
DN-19 36U-6/6-1	4016032332299	36	Grey	RAL 7035	1.787			66,3
DN-19 36U-6/6-B-1	4016032332305		Black	RAL 9005				
DN-19 42U-6/6-1	4016032331179	42	Grey	RAL 7035	2.053			73,7
DN-19 42U-6/6-B-1	4016032353317		Black	RAL 9005				
DN-19 47U-6/6-1	4016032332657	47	Grey	RAL 7035	2.275			80
DN-19 47U-6/6-B-1	4016032332664		Black	RAL 9005				

## 482,6 mm (19") Network Cabinet Unique Series // 600x800 mm (WxD)



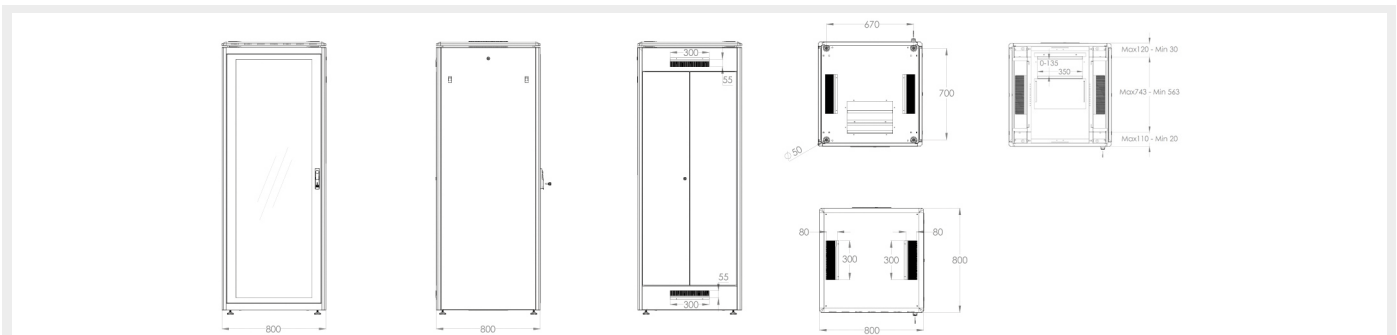
Art.-Nr.	EAN Code	HE	Color	RAL	Height (mm)	Width (mm)	Depth (mm)	Net weight (kg)
DN-19 22U-6/8-1	4016032331117	22	Grey	RAL 7035	1.164	600	800	64,2
DN-19 22U-6/8-B-1	4016032332244		Black	RAL 9005				
DN-19 26U-6/8-1	4016032331148	26	Grey	RAL 7035	1.342			69,8
DN-19 26U-6/8-B-1	4016032332268		Black	RAL 9005				
DN-19 32U-6/8-1	4016032331155	32	Grey	RAL 7035	1.609			79,9
DN-19 32U-6/8-B-1	4016032332282		Black	RAL 9005				
DN-19 36U-6/8-1	4016032332312	36	Grey	RAL 7035	1.787			86,4
DN-19 36U-6/8-B-1	4016032381105		Black	RAL 9005				
DN-19 42U-6/8-1	4016032331056	42	Grey	RAL 7035	2.053			90
DN-19 42U-6/8-B-1	4016032332435		Black	RAL 9005				
DN-19 47U-6/8-1	4016032149132	47	Grey	RAL 7035	2.275			99,9
DN-19 47U-6/8-B-1	4016032377955		Black	RAL 9005				

## 482,6 mm (19") Network Cabinet Unique Series // 600x1.000 mm (WxD)



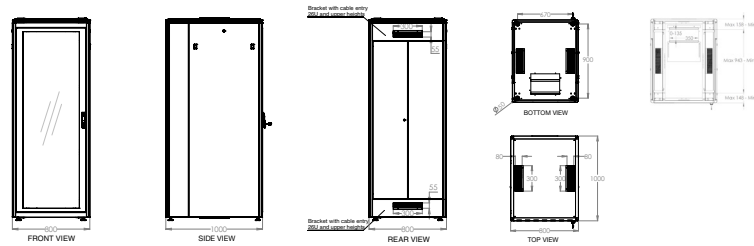
Art.-Nr.	EAN Code	HE	Color	RAL	Height (mm)	Width (mm)	Depth (mm)	Net weight (kg)	Load capacity (kg)
DN-19 26U-6/10-1	4016032332251	26	Grey	RAL 7035	1.342	600	1.000	77	800
DN-19 26U-6/10-B-1	4016032377962		Black	RAL 9005					
DN-19 42U-6/10-1	4016032332381	42	Grey	RAL 7035	2.053				
DN-19 42U-6/10-B-1	4016032332398		Black	RAL 9005					
DN-19 47U-6/10-1	4016032332640	47	Grey	RAL 7035	2.275				
DN-19 47U-6/10-B-1	4016032377979		Black	RAL 9005					

## 482,6 mm (19") Network Cabinet Unique Series // 800x800 mm (WxD)



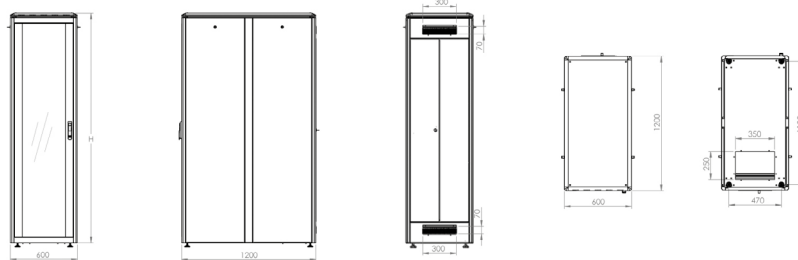
Art.-Nr.	EAN Code	HE	Color	RAL	Height (mm)	Width (mm)	Depth (mm)	Net weight (kg)	Load capacity (kg)
DN-19 22U-8/8-1	4016032331124	22	Grey	RAL 7035	1.164	800	800	68	800
DN-19 22U-8/8-B-1	4016032344322		Black	RAL 9005					
DN-19 26U-8/8-1	4016032353515	26	Grey	RAL 7035	1.342				
DN-19 26U-8/8-B-1	4016032377986		Black	RAL 9005					
DN-19 32U-8/8-1	4016032331162	32	Grey	RAL 7035	1.609				
DN-19 32U-8/8-B-1	4016032343394		Black	RAL 9005					
DN-19 36U-8/8-1	4016032332329	36	Grey	RAL 7035	1.787				
DN-19 36U-8/8-B-1	4016032332336		Black	RAL 9005					
DN-19 42U-8/8-1	4016032334217	42	Grey	RAL 7035	2.053				
DN-19 42U-8/8-B-1	4016032343585		Black	RAL 9005					
DN-19 47U-8/8-1	4016032166740	47	Grey	RAL 7035	2.275				
DN-19 47U-8/8-B-1	4016032377993		Black	RAL 9005					

## 482,6 mm (19") Network Cabinet Unique Series // 800x1.000 mm (WxD)



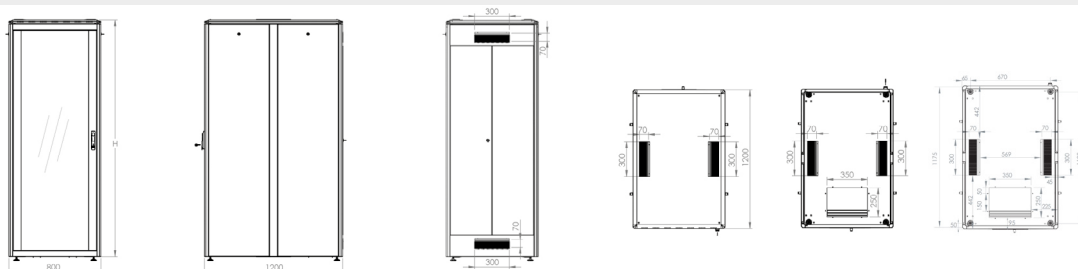
Art.-Nr.	EAN Code	HE	Color	RAL	Height (mm)	Width (mm)	Depth (mm)	Net weight (kg)	Load capacity (kg)
DN-19 26U-8/10-1	4016032341161	26	Grey	RAL 7035	1.342	800	1.000	88	800
DN-19 26U-8/10-B-1	4016032370789		Black	RAL 9005					
DN-19 42U-8/10-1	4016032331186	42	Grey	RAL 7035	2.053			145	
DN-19 42U-8/10-B-1	4016032332442		Black	RAL 9005					
DN-19 47U-8/10-1	4016032353522	47	Grey	RAL 7035	2.275			159	
DN-19 47U-8/10-B-1	4016032378006		Black	RAL 9005					

## 482,6 mm (19") Network Cabinet Unique Series // 600x1.200 mm (WxD)



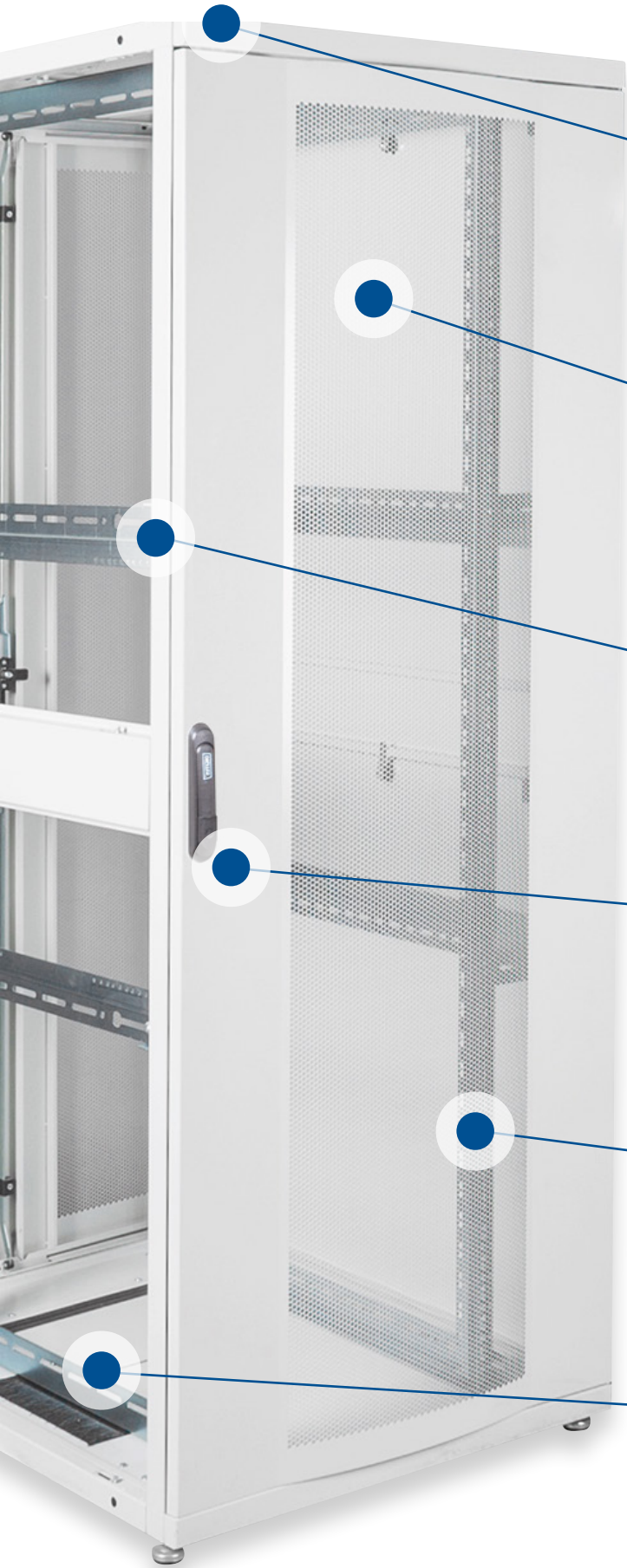
Art.-Nr.	EAN Code	HE	Color	RAL	Height (mm)	Width (mm)	Depth (mm)	Net weight (kg)	Load capacity (kg)
DN-19 42U-6/12-1	4016032364252	42	Grey	7035	2.053	600	1.200	133	800
DN-19 42U-6/12-1B	4016032364269		Black	9005					
DN-19 47U-6/12-1	4016032364283	47	Grey	7035	2.275			149	
DN-19 47U-6/12-1B	4016032364290		Black	9005					

## 482,6 mm (19") Network Cabinet Unique Series // 800x1.200 mm (WxD)



Art.-Nr.	EAN Code	HE	Color	RAL	Height (mm)	Width (mm)	Depth (mm)	Net weight (kg)	Load capacity (kg)
DN-19 42U-8/12-1	4016032361879	42	Grey	7035	2.053	800	1.200	152	800
DN-19 42U-8/12-1B	4016032364276		Black	9005					
DN-19 47U-8/12-1	4016032364306	47	Grey	7035	2.275			169	
DN-19 47U-8/12-1B	4016032364313		Black	9005					

## Server Cabinet Unique Series



### Roof

- Special roof construction for fan unit
- Removable lid with perforation



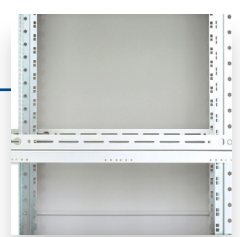
### Steel doors with 70% perforation

- 230° door opening angle
- Swing handle with profile half-cylinder lock incl. key on front and rear doors
- 4-point locking (front door), 3-point locking (rear door)
- Front door with arching in perforated area



### Depth strut

- Offer additional torsional strength



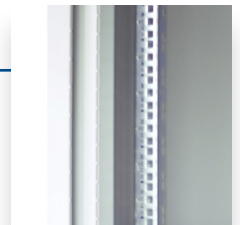
### Side panels

- Lockable and detachable
- Horizontally separated



### 482,6 mm (19") profile rails

- 1.000 kg load capacity



### Cable inlets

- Brush strips on the left and right (top and bottom) for cabinets 800 mm and wider
- Sliding cable entry with rubber sealing on the top and base



## Server Cabinet Unique Series 600, 800 mm width - 1.000, 1.200 mm depth

The server racks of the Unique series have been developed for the high demands of IT infrastructure and cabling. Thoughtful optimizations this series offers usual high DIGITUS® quality.

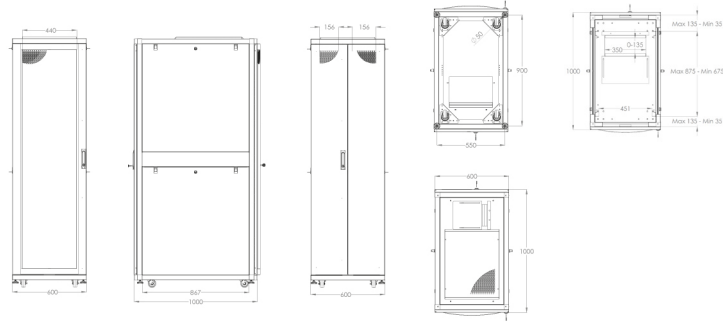
Each cabinet is designed to be user-friendly and has an aesthetic design. The stable construction ensures that even heavier equipment can be installed. The load capacity is up to 1.000 kg.



### Main features

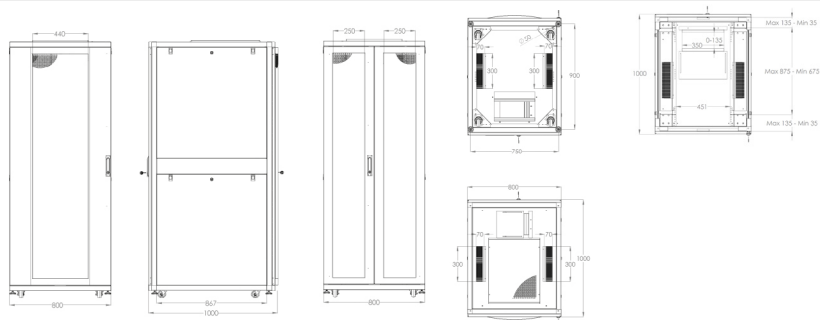
- Safety class rating IP20
- Front and rear doors made out of 70% perforated steel
- Swing handle with profile half-cylinder lock incl. key on front and rear doors
- 230° door opening angle on front and rear doors
- Double wing opening rear door
- Front door with 4-point locking and rear door with 3-point locking
- Horizontally separated side panels (two per side), lockable and detachable
- incl. 4 pieces of leveling feet and 4 pieces of castor, already pre-configured under the cabinet (front castor are lockable)
- 482,6 mm (19") profile rails mounted on the front- and rear side inside of the rack, galvanized
- 482,6 mm (19") profile rails are adjustable in depth and with height unit marking
- Load capacity 482,6 mm (19") profile rails: 1.000 kg
- 1,5 to 2,0 mm strong steel sheet
- High frame strength due to special sheet metal bending technology
- Built-in depth support bars for more stability
- Sliding cable entry with rubber sealing on the top and base
- Top and base with brushed cable entries left and right (for cabinets from 800 mm width)
- Special roof construction for fan unit, incl. perforated cover
- Various grounding points in the cabinet for components
- Rack is completely mounted
- Other colours are available on request

## 482,6 mm (19") Server Cabinet Unique Series // 600x1.000 mm (WxD)



Art.-Nr.	EAN Code	Variante	HE	Color	RAL	Height (mm)	Width (mm)	Depth (mm)	Net weight (kg)	Load capacity (kg)						
DN-19 SRV-26U-1	4016032331339	Perforated door	26	Grey	7035	1.260	600	1.000	70	1.000						
DN-19 SRV-26U-B-1	4016032332503			Black	9005											
DN-19 SRV-26U-GD-1	4016032334231	Glass door		Grey	7035											
DN-19 SRV-26U-B-G-1	4016032332497			Black	9005											
DN-19 SRV-36U-1	4016032332527	Perforated door	36	Grey	7035	1.705			600		1.000	97,2	1.000			
DN-19 SRV-36U-B-1	4016032332541			Black	9005											
DN-19 SRV-36U-G-1	4016032332510	Glass door		Grey	7035											
DN-19 SRV-36U-B-G	4016032332534			Black	9005											
DN-19 SRV-42U-N-1	4016032334248	Perforated door	42	Grey	7035	1.970						600		1.000	114	1.000
DN-19 SRV-42U-B-1	4016032332404			Black	9005											
DN-19 SRV-42U-GD-1	4016032332589	Glass door		Grey	7035											
DN-19 SRV-42U-B-GD-1	4016032332596			Black	9005											
DN-19 SRV-47U-N	4016032205838	Perforated door	47	Grey	7035	2.192	600	1.000		127					1.000	
DN-19 SRV-47U-B-1	4016032372530			Black	9005											
DN-19 SRV-47U-GD-1	4016032333135	Glass door		Grey	7035											
DN-19 SRV-47U-B-GD-1	4016032378075			Black	9005											

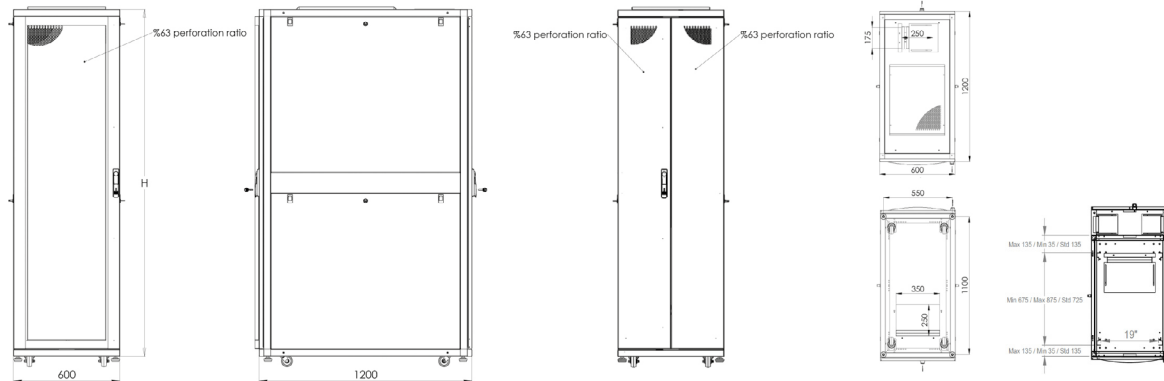
## 482,6 mm (19") Server Cabinet Unique Series // 800x1.000 mm (WxD)



Art.-Nr.	EAN Code	Variation	HE	Color	RAL	Height (mm)	Width (mm)	Depth (mm)	Net weight (kg)	Load capacity (kg)			
DN-19 SRV-42U-8-N-1	4016032334224	Perforated door	42	Grey	7035	1.970	800	1.000	128	1.000			
DN-19 SRV-42U-8-B	4016032331766			Black	9005								
DN-19 SRV-42U-8-N1GD	4016032378082	Glass door		Grey	7035								
DN-19 SRV-42U-8-B-GD	4016032336600			Black	9005								
DN-19 SRV-47U-8-1	4016032333111	Perforated door	47	Grey	7035	2.192			800		1.000	145	1.000
DN-19 SRV-47U-8-B-1	4016032333128			Black	9005								
DN-19 SRV-47U-8-GD-1	4016032333104	Glass door		Grey	7035								
DN-19 SRV-47U-8-B-GD	4016032378099			Black	9005								

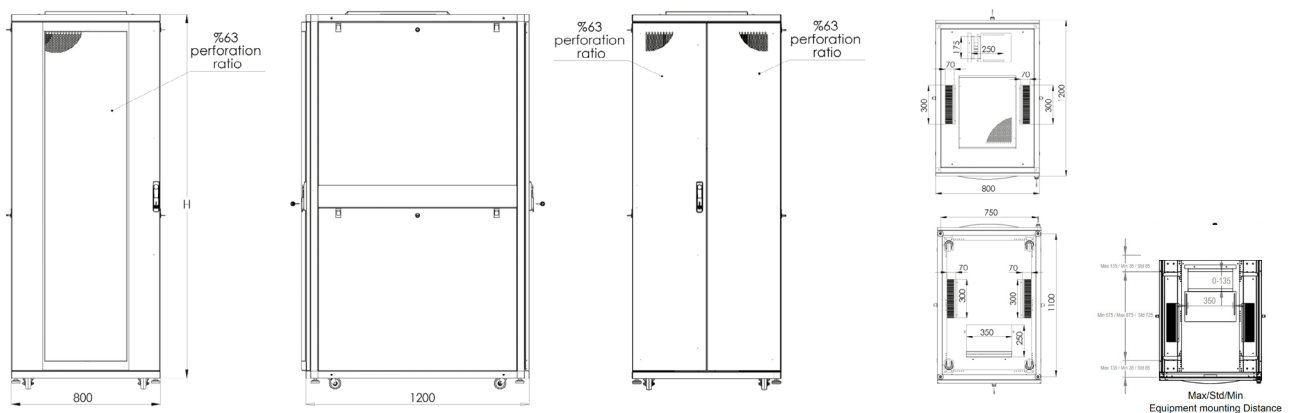


## 482,6 mm (19") Server Cabinet Unique Series // 600x1.200 mm (WxD)



Art.-Nr.	EAN Code	Variation	HE	Color	RAL	Height (mm)	Width (mm)	Depth (mm)	Net weight (kg)	Load capacity (kg)
DN-19 SRV-42U-6/12	4016032364320	Perforierte Tür	42	Grey	7035	1.970	600	1.200	125	1.000
DN-19 SRV-42U-6/12B	4016032364337			Black	9005					
DN-19 SRV-47U-6/12	4016032364351		47	Grey	7035	2.192			136	
DN-19 SRV-47U-6/12B	4016032364368			Black	9005					

## 482,6 mm (19") Server Cabinet Unique Seriest // 800x1.200 mm (WxD)



Art.-Nr.	EAN Code	Variation	HE	Color	RAL	Height (mm)	Width (mm)	Depth (mm)	Net weight (kg)	Load capacity (kg)
DN-19 SRV-42U-8/12	4016032361381	Perforated door	42	Grey	7035	1.970	800	1.200	144	1.000
DN-19 SRV-42U-8/12B	4016032364344			Black	9005					
DN-19 SRV-47U-8/12	4016032364375		47	Grey	7035	2.192			159	
DN-19 SRV-47U-8/12B	4016032364382			Black	9005					

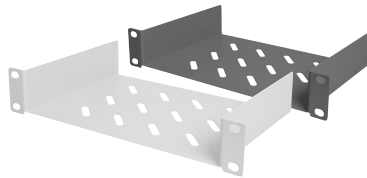
NETWORK AND SERVER CABINETS  
**ACCESSORIES**



**DIGITUS® 254 mm (10") 1U Shelf**

254 mm (10") 1U fixed shelf 44x254x150 mm, color grey (RAL 7035) r black (RAL 9005)

Future-orientated standards and high-end quality for your network.



Technical details

- Perfect for storing components, that are not 254 mm (10") in size
- Slim design that takes up the space of 1 height unit
- Quick and easy to assemble and disassemble

**DN-10 TRAY-1** | EAN 4016032139836 | 254 mm (10") 1U fixed shelf 44x254x150 mm, color grey (RAL 7035) or black (RAL 9005)

**DIGITUS® Shelf for Fixed Installation in 483 mm (19") Cabinets**

1U fixed shelf for racks from 400 mm depth 45x483x250 mm, up to 15 kg, grey (RAL 7035) or black (RAL 9005)

Future-orientated standards and high-end quality for your network.



Technical details

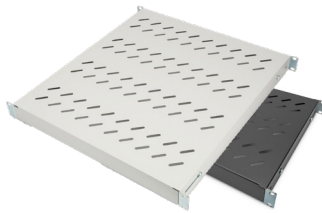
- Perfect for storing components that are not suitable for 483 mm (19")
- Slim design that takes up the space of 1 height unit
- Quick and easy to assemble and disassemble

**DN-97609** | EAN 4016032275084 | 1U fixed shelf for racks from 400 mm depth 45x483x250 mm, up to 15 kg, grey (RAL 7035) or black (RAL 9005)

## DIGITUS® Shelf with Variable Rails for Fixed Mounting in 483 mm (19") Cabinets

1U fixed shelf for 800 mm depth racks 44x482x500 mm, adjust. 500-700 mm depth, grey or black (RAL 9005)

Future-orientated standards and high-end quality for your network.



Technical details

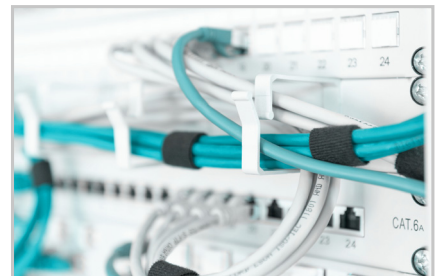
- For fixed installation on the four 483 mm (19") profile rails
- Sturdy, perforated metal sheet
- incl. fastening material
- 4-point mounting (front and rear 19" profile rails)
- Colour: Light grey, RAL 7035
- Load capacity: 50 kg
- Installation type: variable mounting rails
- U: 1
- Weight: 3.2 kg
- Inch form factor (IEC 60297): 482.6 mm (19")
- Suitable cabinet depth: 800 mm

DN-97646 | EAN 4016032364986 | 1U fixed shelf for 800 mm depth racks 44x482x500 mm, adjust. 500-700 mm depth, grey or black

## DIGITUS® Cable Management Panel with Cable Rings for 483 mm (19") Cabinets, 1U

1U cable management panel 5x cable rings 40x60 mm, color grey (RAL 7035) or black (RAL 9005)

Future-orientated standards and high-end quality for your network.



Technical details

- For mounting on the 483 mm (19") profile rails
- Robust sheet steel
- 5x cable management brackets (HxD: 40x60 mm)
- incl. mounting material
- Colour: Light grey, RAL 7035
- U: 1
- Inch form factor (IEC 60297): 482.6 mm (19")

DN-97601 | EAN 4016032266440 | 1U cable management panel 5x cable rings 40x60 mm, color grey (RAL 7035) or black (RAL 9005)

## DIGITUS® Cable Brush Management Panel for 483 mm (19") Cabinets

1U cable brush management panel open brush, color black (RAL 9005)

Future-orientated standards and high-end quality for your network.



Technical details

- Robust sheet steel
- Opening with brush strip (HxW: 27x423 mm)
- incl. fastening material
- Colour: black, RAL 9005
- HE: 1
- Inch form factor (IEC 60297): 482.6 mm (19")

DN-97661 | EAN 4016032430605 | 1U cable brush management panel open brush, color black (RAL 9005)



<https://at.assmann.shop/en/IT-Infrastructure/Accessories/Fan-Units/>

Intelligent utilisation of  
**HOT AND COLD  
AIR FLOWS**

Learn more:



## DIGITUS® Roof Ventilation Unit for 483 mm (19") Wall Mounting Cabinets

Roof vent. unit, wall mounting cabinets 2 fans, thermostat, switch, grey (RAL 7035)

The DIGITUS 483 mm (19") equipment is made for high demand IT-infrastructure solutions, produced on German standards.



### Technical details

- Housing made of robust sheet steel
- Fan with grille cover
- Noise level: 47 dBm
- 2 fans
- incl. thermostat, adjustable from 0 °C to +70 °C
- On/off switch
- Air flow rate: 4.6 m³/min.
- 1.8 m supply cable with CEE 7/7 (type F) plug
- Colour: Light grey, RAL 7035
- Air flow rate: 4.6 m³/min
- Filter: no
- For enclosure series: Wall-mounted enclosure
- Inch form factor (IEC 60297): 482.6 mm (19")
- Mounting area: Roof
- Number of installed fans: 2

**DN-19 FAN-2-WM-T** | EAN 4016032158752 | Roof vent. unit, wall mounting cabinets 2 fans, thermostat, switch, grey (RAL 7035) or black (RAL 9005)

## DIGITUS® Roof Cooling Unit for Unique & Varioflex-N Network Cabinets & Dynamic Basic Network- and Server Cabinets

Roof ventilation unit, 2 fans, grey for network cabinets Unique, Varioflex-N, Dynamic

The DIGITUS 483 mm (19") equipment is made for high demand IT-infrastructure solutions, produced on German standards.



### Technical details

- For installation in the roof module
- 2 fans
- Noise level: 47 dBm
- Incl. thermostat, adjustable from 0 °C to +70 °C
- On/off switch
- Air flow rate: 4.6 m³/min (276 m³/h)
- 1.8 m supply cable with earthing contact plug (CEE 7/7, type F)
- Protection class IP21 ensures that when installed under the roof in network cabinets of the Unique series
- Colour: Light grey, RAL 7035
- Air flow rate: 4.6 m³/min
- Filter: No
- For enclosure series: Unique Network, Dynamic Basic
- Inch form factor (IEC 60297): 482.6 mm (19")
- Mounting area: Roof
- Number of installed fans: 2

**DN-19 FAN-2-N** | EAN 4016032331230 | Roof ventilation unit, 2 fans, grey for network cabinets Unique, Varioflex-N, Dynamic, grey (RAL 7035) or black (RAL 9005)

## DIGITUS 483 mm (19") DIN Rail Holder, 4U

DIN rail holder, 4U, 178x483x223 mm, galvanized incl. din rail, variable depth and height



### Technical details

- For quick, screwless mounting of 35 mm DIN rail devices
- Incl. built-in top-hat rail in accordance with DIN EN 60715 (HxW= 35x390 mm), depth-adjustable
- Rear with height-adjustable C-rail for cable retention
- Galvanized sheet steel

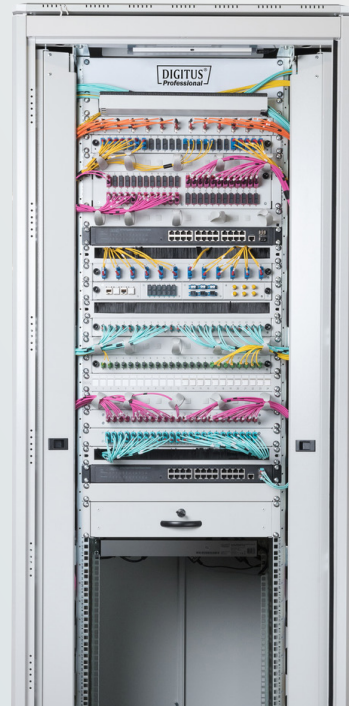
**DN-19-DIN-4U** | EAN 4016032456100 | DIN rail holder, 4U, 178x483x223 mm, galvanized incl. din rail, variable depth and height

## Now the cabinets with the perfectly matched **ACCESSORY COMPONENTS!**

To ensure the optimum functionality of your network, useful useful accessory products are also relevant. DIGITUS® offers a wide range of useful aids here.



Learn more:  
<https://at.assmann.shop/en/IT-Infrastructure/Accessories/>



## **FAST & INTUITIVE TO THE DESIRED PRODUCT**

quite simply with our  
cabinet finder



Learn more:  
<https://www.at.assmann.com/en-at/services-tools/product-finder/>

## NETWORK INFRASTRUCTURE NETWORK SWITCHES



<https://at.assmann.shop/en/Active-Network-Components/Network-Switches/>

Learn more:



Protection class IP 40



Lightning protection/  
Surge protection



Protection against short circuits



Extended operating temperature range  
-45°/+85°

### DIGITUS Industrial 4+2 -Port Gigabit Ethernet Switch

**Industrial 4+2 -Port Gigabit Ethernet Switch 4 Port GE RJ 54, 2 GE SFP Port**

**4 x 10/100/1000 BASE-TX RJ45 + 2x 1000Base-Fx ports. The IP40 enclosure with redundant power supply is ideal for monitoring, control management and wireless services at -40° to 80°.**



#### Technical details

- Number of network connections: 4 GE ports, 2 SFP GE ports
- Transmission speed of the RJ45 network ports: 4 x 10/100/1000 Mbit (RJ45)
- Transmission speed of the uplink ports: 2 x 10/100/1000 Mbit (SFP)
- Redundant power supply 12-48 V (DC)
- Metal housing to IP40 standard
- Simple mounting on a top-hat rail
- Operating temperature from - 40° up to 80° C
- Simple plug & play installation
- ESD & EFT protection up to 6 kV (DC)
- Ideal for connecting camera systems

**DN-651148** | EAN 4016032489245 | Industrial 4+2 -Port Gigabit Ethernet Switch

**DN-651150** | EAN 4016032489269 | Industrial 8 +2-Port Gigabit Ethernet Switch

## DIGITUS Industrial 4+2 -Port L2 managed Gigabit Ethernet Switch

Ind. 4+2-Port L2 managed Gigabit Ethernet Switch  
4 x GE RJ45 + 2 SFP Port

4x 10/100BASE-TX RJ45 + 2x 1000Base-Fx ports, L2 Management functions. The IP40 housing with redundant power supply is ideal for monitoring, control management and wireless services at -40 to 80 .



### Technical details

- 4 GE RJ45 ports, 2 SFP GE ports
- 4 x 10/100/1000 Mbit (RJ45)
- 2 x 10/100/1000 Mbit (SFP)
- Redundant power supply 12-48 V (DC)
- Metal housing to IP40 standard
- Simple mounting on a top-hat rail
- Operating temperature from - 40° to 80° C
- Numerous L2 management features
- ESD & EFT protection up to 8 kV (DC)
- Ideal for connecting camera systems

DN-651154 | EAN 4016032490203 | Industrial 4+2 -Port L2 managed Gigabit Ethernet Switch

DN-651156 | EAN 4016032490180 | Industrial 8+2 -Port L2 managed Gigabit Ethernet Switch

DN-651158 | EAN 4016032490227 | Industrial 16+2 -Port L2 managed Gigabit Ethernet Switch

## DIGITUS Industrial 4+2-Port Gigabit Ethernet PoE Switch

Industrial 4+2 -Port Gigabit Ethernet PoE Switch 4 Port GE PoE RJ45, 2 GE SFP Port

4 x PoE 10/100/1000 BASE-TX RJ45 + 2x 1000Base-Fx ports. The IP40 housing with redundant power supply is ideal for monitoring, control management and wireless services at -40° to 80°.



### Technical details

- Number of network connections: 4 GE ports, 2 SFP GE ports
- Transmission speed of the RJ45 network ports: 4 x 10/100/1000 Mbit (RJ45, PoE 802.3af/at)
- Transmission speed of the uplink ports: 2 x 10/100/1000 Mbit (SFP)
- Redundant power supply 48-57 V (DC)
- Metal housing to IP40 standard
- Simple mounting on a top-hat rail
- Operating temperature from - 40° up to 80° C
- Simple plug & play installation
- ESD & EFT protection up to 6 kV (DC)
- Ideal for connecting camera systems

DN-651149 | EAN 4016032489252 | Industrial 4+2-Port Gigabit Ethernet PoE Switch

DN-651151 | EAN 4016032489276 | Industrial 8 + 2 -Port Gigabit Ethernet PoE Switch



Learn more:

<https://at.assmann.shop/en/Active-Network-Components/Network-Switches/Industrial-Network-Switches/>

## DIGITUS Industrial 8 + 4 10G Uplink Port L3 managed Gigabit Ethernet Switch

**Ind. 8+4SFP+PortL3 managed Gigabit Ethernet Switch 8 x GE RJ45 + 4 SFP+ Port**

The DN-651160 is a high-performance industrial switch that fulfils the highest demands in terms of performance, reliability and flexibility.



### Technical details

- Data control: Support of 802.3X full-duplex flow control, support of network storm suppression
- Redundant network: Support of STP/RSTP/MSTP, support of ERPS (self-healing time <20ms)
- Multicast management: support for IGMP Snooping V1/V2/V3
- Redundancy backup: supports the virtual route redundancy protocol VRRP
- VLAN: Support for IEEE 802.1Q VLAN, effective isolation of the broadcast domain
- Link aggregation: Supports static/dynamic link aggregation, offers perfect bandwidth utilisation
- QoS: Support of COS\DSCP, 4 queues, support of WRR\SP scheduling mode

**DN-651160** EAN 4016032490241 | Industrial 8 + 4 10G Uplink Port L3 managed Gigabit Ethernet Switch

## DIGITUS® Industrial 8 + 4-Port Gigabit Ethernet Switch

**Industrial 8 +4-Port Gigabit Ethernet Switch 8 x GE RJ45 + 2 SFP+ Port**

8x 10/100/1000 BASE-TX RJ45 + 4 x 1000Base-Fx ports. The IP40 enclosure with redundant power supply is ideal for monitoring, control management and wireless services at -40° to 80°



### Technical details

- 8 port GE, 2 SFP GE ports
- 8 x 10/100/1000 Mbit (RJ45)
- 4 x 10/100/1000 Mbit (SFP)
- Redundant power supply 12-48 V (DC)
- Metal housing to IP40 standard
- Simple mounting on a top-hat rail
- Operating temperature from - 40° up to 80° C
- Simple plug & play installation
- ESD & EFT protection up to 6 kV (DC)
- Ideal for connecting camera systems

**DN-651152** EAN 4016032490487 | Industrial 8 + 4-Port Gigabit Ethernet Switch

## DIGITUS Industrial 8+4 -Port Gigabit Ethernet PoE Switch

**Industrial 8+4-Port Gigabit Ethernet PoE Switch 8 x GE RJ45 + 2 SFP+ Port, PoE**

8x PoE 10/100/1000 BASE-TX RJ45 + 4 x 1000Base-Fx ports. The IP40 enclosure with redundant power supply is ideal for monitoring, control management and wireless services at -40 to 80 .



### Technical details

- 8 port GE, 2 SFP GE ports
- 8 x 10/100/1000 Mbit (RJ45, PoE 802.3af/at)
- 4 x 10/100/1000 Mbit (SFP)
- Redundant power supply 48-57 V (DC)
- Metal housing to IP40 standard
- Simple mounting on a top-hat rail
- Operating temperature from - 40° up to 80° C
- Simple plug & play installation
- ESD & EFT protection up to 6 kV (DC)

**DN-651153** | EAN 4016032489269 | Industrial 8+4 -Port Gigabit Ethernet PoE Switch



## DIGITUS Industrial 4+2-Port L2 managed Gigabit Ethernet PoE Switch

Ind. 4+2-Port Gigabit L2 managed Ethernet POE Swit 4 x GE RJ45 + 2 SFP Port, IEEE802.3af (30W)

4 x 10/100/1000 BASE-TX RJ45 + 2x 1000Base-Fx ports, L2 manageable, IP40 housing with redundant power supply, ideal for monitoring, control management and wireless services at -40 to 80 °C. Ports 1-4 (RJ45) support PoE according to the IEEE802.3af/at stan



### Technical details

- 4 GE RJ45 ports, 2 SFP GE ports
- 4 x 10/100/1000 Mbit (RJ45, PoE IEEE802.3af/at)
- 2 x 10/100/1000 Mbit (SFP)
- Redundant power supply 48 -57V (DC)
- Metal housing to IP40 standard
- Simple mounting on a top-hat rail
- Operating temperature from - 40° up to 80° C
- Numerous L2 management features
- ESD & EFT protection up to 8 kV (DC)
- Ideal for connecting camera systems

**DN-651155** EAN 4016032490197 | Industrial 4+2-Port L2 managed Gigabit Ethernet PoE Switch

**DN-651157** EAN 4016032489252 | Industrial 4+2-Port Gigabit Ethernet PoE Switch

## DIGITUS Industrial 16+2-Port L2 managed Gigabit Ethernet PoE Switch

Ind. 16+2-Port Gigabit L2 managed Ethernet POE Swi 16 x GE RJ45 + 2 SFP Port, IEEE802.3af (30W)

16 x 10/100/1000 BASE-TX RJ45 + 2x 1000Base-Fx ports, L2 manageable, IP40 housing with redundant power supply, ideal for monitoring, control management and wireless services at -40 to 80 °C. Ports 1-16 (RJ45) support PoE according to the IEEE802.3af/at st



### Technical details

- 16 port GE RJ45, 2 SFP GE ports
- 16 x 10/100/1000 Mbit (RJ45, PoE IEEE802.3af/at)
- 2 x 10/100/1000 Mbit (SFP)
- Redundant power supply 48 -57V (DC)
- Metal housing to IP40 standard
- Simple mounting on a top-hat rail
- Operating temperature from - 40° up to 80° C
- Numerous L2 management features
- ESD & EFT protection up to 8 kV (DC)
- Ideal for connecting camera systems

**DN-651159** EAN 4016032490234 | Industrial 16+2-Port L2 managed Gigabit Ethernet PoE Switch

## DIGITUS Industrial 8 + 4 10G Uplink Port L3 managed Gigabit Ethernet PoE Switch

Ind. 8+4SFP+PortL2 managed Gigabit Ethernet POE Sw 8 x GE RJ45 +4 SFP+ Port, PoE

The DN-651161 is a high-performance industrial PoE switch that fulfils the highest demands in terms of performance, reliability and flexibility.



### Technical details

- Data control: Support for 802.3X full-duplex flow control, support for network storm suppression
- Redundant network: Support of STP/RSTP/MSTP, support of ERPS (self-healing time <20ms)
- Supports PoE according to standard IEEE802.3af/at (up to 30W)
- Multicast management: support for IGMP Snooping V1/V2/V3
- Redundancy backup: supports the virtual route redundancy protocol VRRP
- VLAN: Support for IEEE 802.1Q VLAN, effective isolation of the broadcast domain
- Link aggregation: Supports static/dynamic link aggregation, offers perfect bandwidth utilisation

**DN-651161** EAN 4016032490258 | Industrial 8 + 4 10G Uplink Port L3 managed Gigabit Ethernet PoE Switch

## DIGITUS® Industrieller Gigabit PoE++ Splitter, 802.3bt

**Industrial Gigabit PoE++ Splitter, 802.3bt selectable power output: 12VDC,16VDC,24VDC,48VDC**

Developed for harsh environments where they are exposed to moisture, temperature fluctuations and vibrations



Technical details

- Gigabit splitter with up to 95 watts PoE power supply
- Output voltage flexibly adjustable: 12VDC, 16VDC, 24VDC, 48VDC
- Gigabit data output for network connection

**DN-651111** EAN 4016032441182 | Industrial Gigabit PoE++ Splitter, 802.3bt selectable power output: 12VDC,16VDC,24VDC,48VDC

## DIGITUS® Gigabit Ethernet PoE Splitter, Industrial, 60W

**Industrial POE Splitter DIN Rail, 60 W, IEEE802.3at/af**

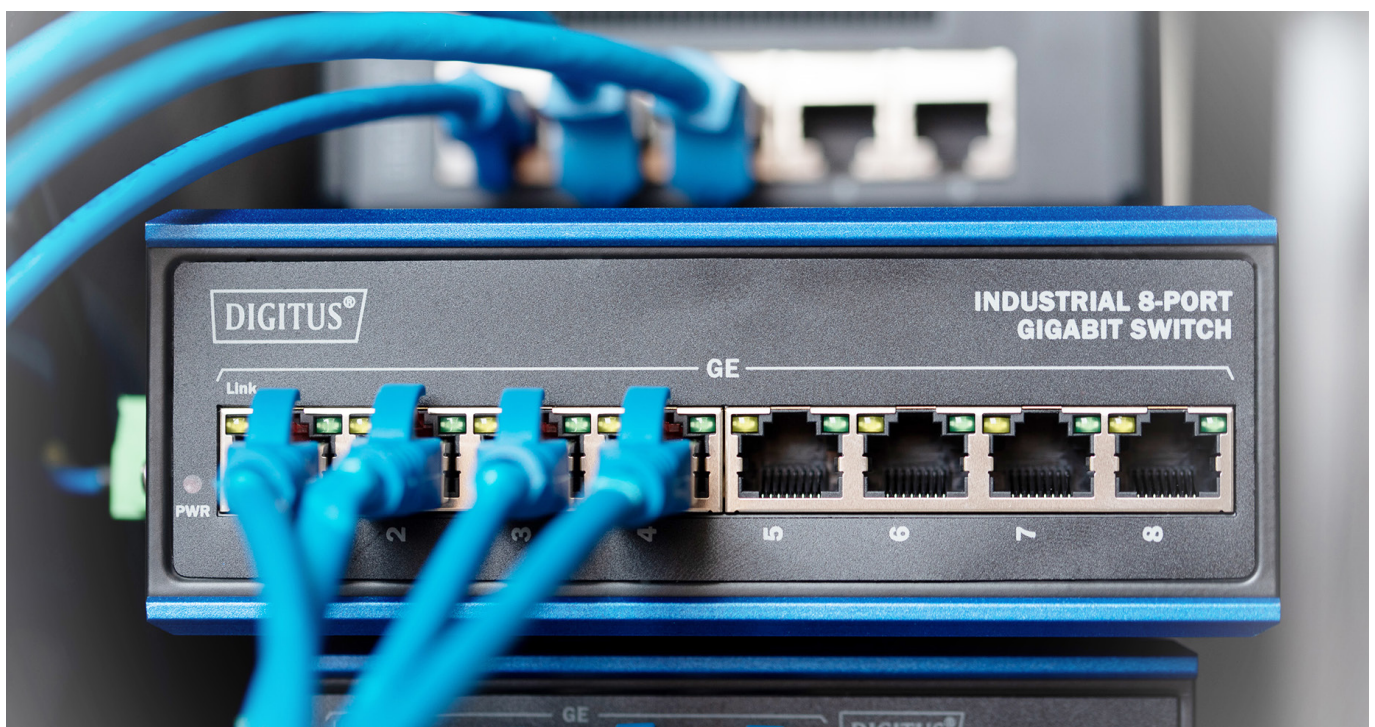
The DN-651140 PoE splitter splits the 48VDC over the RJ45 Ethernet cable into 12VDC power output. Supports PoE applications in Gigabit Ethernet environments



Technical details

- Ports: 1: 10/100/1000M RJ45 PoE port (DATA + POWER IN), 2: 10/100/1000M RJ45 LAN port (DATA only), 3: connector (DC OUT)
- Network media: 10Mbps: Cat 3,4,5, 100Mbps: Cat 5,5E, 1000Mbps: Cat 5E, 6
- Pass-through data rates: 10/100/1000 Mbps
- Supported standards: IEEE802.3, IEEE802.3u, IEEE802.3az, IEEE802.3x, IEEE802.3af, IEEE802.3at, IEEE802.3bt
- Output voltage: 12V DC, maximum current 4.25A
- Power supply: DC input voltage: 36 to 57 V AC
- Indicator: PoE ready / in operation
- Network media (cable): 10BASE-T: UTP category 3,4,5 cable (≤100m), 100BASE-TX: UTP category 3,4,5 cable (≤100m), 1000BASE-T: UTP category 5e cable (≤100m)
- Connectors: Shielded RJ-45, EIA 568A and 568B

**DN-651140** EAN 4016032486756 | Gigabit Ethernet PoE Splitter, Industrial, 60W



POE

## SURGE PROTECTION

### DIGITUS PoE Surge Protector (RJ45), DIN-Schienenmontage, Indoor

Indoor DIN PoE surge protector

Surge protection up to 10 kV for network and PoE devices



Technical details

- Protects your network devices against voltage surges up to 10 kV
- Support for Gigabit networks (10/100/1000Mbps)
- Supports PoE-Standards up to PoE++ (IEEE802.3af/at/bt)
- Single-port (1 x RJ45 input / 1 x RJ45 output)
- Easy installation by snapping onto a DIN rail (35 mm profile rail)
- Designed for a high temperature range from -40 °C to +85 °C
- Developed for industrial use
- Reliable protection against weather and lightning

**DN-95421** EAN 4016032473053 | PoE Surge Protector (RJ45), DIN-Schienenmontage, Indoor

### DIGITUS Gigabit Outdoor 60W PoE Surge Protector

Outdoor POE Surge Protector (60W) 10/100/1000  
Mbits , -40 to 65C, IP67, 10KV, 20KA

DN-95424 is a single-port PoE surge protector  
designed for exterior applications with an IP 67  
rated Aluminum alloy case.



Technical details

- maximum common mode surge voltage is 10KV(10/700us)
- and max differential mode surge voltage is 6KV(10/700us)
- supports 10/100/1000Mbps of data rates
- Ideal for 60W(max) PoE wires
- IP 67 ideal designed for outdoor use

**DN-95424** EAN 4016032482420 | Gigabit Outdoor 60W PoE Surge Protector

### DIGITUS Gigabit Outdoor 100W PoE Surge Protector

Outdoor POE Surge Protector (100W) 10/100/1000  
Mbits -40 to 65C, IP67, 10KV, 20KA

DN-95425 is a single-port PoE surge protector  
designed for exterior applications with an IP 67  
rated Aluminum alloy case.



Technical details

- maximum common mode surge voltage is 10KV(10/700us)
- and max differential mode surge voltage is 6KV(10/700us)
- supports 10/100/1000Mbps of data rates
- Ideal for 110 W(max) PoE wires
- IP 67 ideal designed for outdoor use

**DN-95425** EAN 4016032482536 | Gigabit Outdoor 100W PoE Surge Protector



SWITCHES  
10"

DIGITUS Professional



Learn more:

<https://at.assmann.shop/en/Active-Network-Components/Network-Switches/10-Network-Switches/>

## DIGITUS® 16 Port Gigabit Switch, 10 Inch, Unmanaged

**Gigabit Ethernet Switch 16-port, 10 inch, unmanaged**

**Gigabit Ethernet Switch suitable for mounting in 10" (254 mm) enclosures.**



### Technical details

- The LAN switch for 10" network cabinets has 16 RJ45 sockets and is ideal for small to medium-sized networks in private and business environments
- The Auto MDI/MDIX function eliminates the need for crossover cables and uplink ports, as the switch checks the pin assignment of the connected device before transferring data
- Transfer rates of up to 20/200/2000 Mbit/s are achieved in full-duplex mode - The MAC memory corresponds to a size of 8000 MAC addresses - The backplane operates at 32 Gbit/s
- The power consumption of the Gbit network switch is 15 watts - The following standards are supported by the switch: IEEE802.3, IEEE802.3u, IEEE802.3ab and IEEE802.3x
- In conjunction with a 10-inch network cabinet and other 10" components, such as a patch panel and connector strip, an efficient yet space-saving network infrastructure can be set up

**DN-80115** EAN 4016032460237 | Gigabit Ethernet Switch 16-port, 10 inch, unmanaged

## DIGITUS® 8-Port Gigabit Switch, 10 Inch, Unmanaged

**Gigabit Ethernet Switch 8-port, 10 inch, unmanaged**

**Ideal for use in 10" wall cabinets**



### Technical details

- The LAN switch for 10" network cabinets has 8 RJ45 sockets and is ideal for small to medium-sized networks in private and business environments
- The Auto MDI/MDI-X function eliminates the need for crossover cables and uplink ports, as the switch checks the pin assignment of the connected device before transmitting data
- In full duplex mode, the switch achieves a data transfer rate of 20 / 200 / 2000 Mbit - The MAC memory corresponds to a size of 8000 MAC addresses - The backplane operates at 16 Gbps
- The power consumption of the Gbit network switch is 5 watts - The following standards are supported by the switch: IEEE802.3, IEEE802.3u, IEEE802.3ab and IEEE802.3x
- In conjunction with a 10-inch network cabinet and other 10" components, such as a patch panel and connector strip, an efficient yet space-saving network infrastructure can be set up

**DN-80114** EAN 4016032441007 | 8-Port Gigabit Switch, 10 Inch, Unmanaged

## DIGITUS® 8-Port Gigabit PoE Switch, 10 Inch, Unmanaged

**Gigabit Ethernet PoE switch 8-port PoE, 10 inch, 80W PoE budget**

**Ideal for use in 10" wall cabinets**



### Technical details

- The PoE+ network switch for 10" racks is compatible with the IEEE 802.3af & at standards for Power over Ethernet and is ideal for small and medium-sized networks in both private and business environments
- To supply the connected PoE devices with power, the LAN switch has a power budget of 80 watts, whereby a single port can provide a maximum of 30 watts
- In addition to the PoE standards, the switch complies with the IEEE802.3, IEEE802.3u, IEEE802.3ab and IEEE802.3x standards - thanks to Auto MDI/MDI-X, the use of crossover patch cables is no longer necessary
- In full duplex mode, the switch achieves a data transfer rate of 20 / 200 / 2000 Mbit - The MAC memory corresponds to a size of 8000 MAC addresses - The backplane operates at 16 Gbps
- In conjunction with a 10-inch network cabinet and other 10" components, such as a patch panel and connector strip, an efficient yet space-saving network infrastructure can be set up PoE standard 802.3af/at

**DN-95317** EAN 4016032441038 | 8-Port Gigabit PoE Switch, 10 Inch, Unmanaged

## DIGITUS 8-Port Gigabit PoE Networkswitch, 10 Zoll, L2 managed, 80 W, af/at

**L2 managed Gigabit Ethernet PoE Switch 8-port PoE, 10 inch, 80W PoE budget**

**L2+ managed Gigabit PoE Switch 802.3at - suitable for installation in 10-inch housing**



### Technical details

- The 8-port Gigabit PoE switch is designed for networks of small to medium-sized companies
- With special functions such as port control, port mirroring, VLAN functions and multicast support, the switch is optimally tailored to the needs of convergence applications in medium-sized networks
- Based on ASIC integration technology, non-blocking IP switching solutions with Gigabit speed are supported
- The switch can be used both as a desktop switch and for installation in 10-inch housings. In conjunction with a 10-inch network cabinet and other 10-inch components, such as a patch panel and connector strip, an efficient yet space-saving network infrastructure can be set up
- 8 Gigabit ports with PoE+ support and a total output of 80 watts are integrated, allowing you to operate devices such as wireless access points, IP cameras or VoIP telephones
- The switch can be customised via various interfaces. The overall height is 1U

**DN-95331** EAN 4016032464365 | 8-Port Gigabit PoE Networkswitch, 10 Zoll, L2 managed, 80 W, af/at

## DIGITUS® 8-Port Gigabit Switch, 10 Inch, Managed

**L2 managed Gigabit Ethernet Switch 8-port, 10 inch**

**L2+ managed Gigabit Switch - suitable for installation in 10-inch housing**



### Technical details

- Despite its compact dimensions, the managed L2+ switch fulfils the highest network requirements for professional applications, e.g. in small and medium-sized companies
- With the help of functions such as port control, port mirroring, VLAN and multicast support, convergence applications in medium-sized networks can be mapped and administered with the switch
- In addition to its own web interface, the SNMP, SSH, CLI, Telnet, TACACS+ and RMON protocols are available for administering the LAN switch (including security functions such as password protection)
- The total power consumption of the Gigabit switch is max. 15 watts - Supported standards: IEEE802.3, IEEE802.3u, IEEE802.3ab, IEEE802.3x Full Duplex Flow Control, IEEE802.3ab Link Aggregation
- In conjunction with a 10-inch network housing and other 10" components, such as a patch panel and connector strip, an efficient yet space-saving network infrastructure can be set up

**DN-80117** EAN 4016032464358 | L2 managed Gigabit Ethernet Switch 8-port, 10 inch



SWITCHES  
19"

<https://de.assmann.shop/en/Active-Network-Components/Network-Switches/19-PoE-Switches/>



Learn more:

## DIGITUS® 24-Port Gigabit PoE Networkswitch,19 Zoll, L2 managed,2 Uplink Ports, SFP, 430 W, af/at

**24 Port L2 Managed Gigabit Ethernet Switch with PoE Injector, 2 SFP Uplink**

The DN-95359 is a case-shaped device with a chassis of 1U high. It provides 24 10/100/1000Base-TX ports + 2 gigabit SFP ports. It provides 24 Port PoE Injector.



Technical details

- Provides 24 10/100/1000 Base-TX ports + 2 Gigabit SFP ports, provides 24 PoE injectors
- Integrated power supply, 450W, high backplane bandwidth 52Gbps
- Supports ICMPv6, IPv6 Neighbour Discovery, MLD Snooping, IPv6 Telnet, Standard IP/ Extend IP / MAC IP / ARP ACL, IGMP Snooping for multi-media applications
- Support for port mirror and bandwidth control, IEEE802.3x Flow Control
- Support of Port Based VLAN / 802.1Q Tag VLAN, IEEE802.3ad Port Trunk with LACP
- Support of the spanning tree protocol IEEE802.1d/802.1w/802.1s
- Support of IEEE 802.1p Class of Service, IEEE 802.1x user authentication
- Support of broadcast storm filter, system event log, command line interface management
- Management via web / SNMP / SSH / Telnet (IPv6-capable) / console
- Layer 2 functions configurable via WebUI
- Unmanaged/managed

**DN-95359** EAN 4016032486503 | 24 Port L2 Managed Gigabit Ethernet Switch with PoE Injector, 2 SFP Uplink

## DIGITUS 24- Port 10/100/1000 + 4SFP+ UPLINK Switch, 19", L2+ Features

**24 Port GE 4 SFP+ UPLINK L2+ Switch 24 Port 10/100/1000+4SFP+ UPLINK Switch**

**24 Port 10/100/1000 + 4 10 G SFP+ UPLINK Switch, 19", L2+ Features**



Technical details

- Support RJ45 Auto-MDI/MDIX
- Panel light monitors working status and assists in fault analysis
- Supports full-duplex IEEE 802.3x flow control and Backpressure half-duplex flow control
- Support Energy-Efficient Ethernet (EEE) function (IEEE802.3az)
- High reliability design, supporting traditional STP/ RST layer 2+ link protection technology; Supports manual aggregation and dynamic aggregation, which increases link bandwidth, improves link reliability, and implements load balancing and link backup
- Management and maintenance Supports Console, Telnet, and SSH management modes
- The system supports WEB management, which facilitates installation and debugging for engineers and maintenance personnel
- Virtual Gateway Supports file upload and download management through TFTP

**DN-80223** EAN 4016032485452 | 24 Port GE 4 SFP+ UPLINK L2+ Switch 24 Port 10/100/1000+4SFP+ UPLINK Switch

DISCOVER  
**OUR SOLUTION FOR  
YOUR STRUCTURED  
BUILDING CABLING**



<https://at.assmann.shop/en/Structured-Cabling/>



## THE BASIS FOR A NETWORKED LIFE.

Experience our IT server, network and peripheral  
infrastructure areas with the unique  
2D Solution & Product Navigator.

**PERIPHERAL INFRASTRUCTURE**

**NETWORK INFRASTRUCTURE**

**SERVER INFRASTRUCTURE**

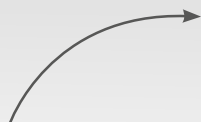
**ELECTROMOBILITY**



<https://www.at.assmann.com/loesungen/2d-produkt-navigator/>

DIGITUS®

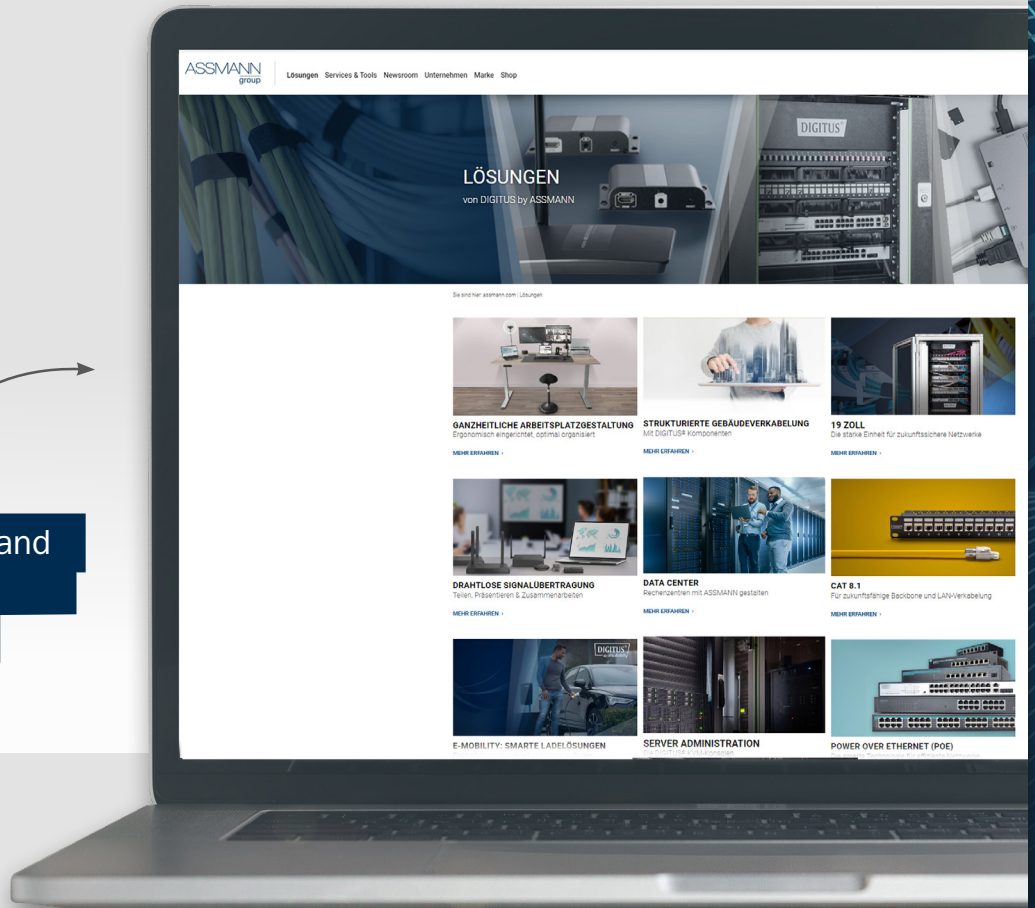
# DISCOVER MORE ABOUT OUR COMPREHENSIVE SOLUTIONS



For more information and  
solutions, please visit  
on our website



<https://www.at.assmann.com/en-at/solutions/>



ASSMANN  
austria

[www.at.assmann.com](http://www.at.assmann.com)

Brand names and logos mentioned are trademarks or registered trademarks of their respective owners. Design deviations from the illustrations, errors and technical changes are reserved. All information without guarantee. We accept no liability for printing errors. Subject to availability, only while stocks last. 03/2024

ASSMANN Electronic GmbH – Österreich  
Gewerbepark 8, A-8401 Kalsdorf / Graz  
Tel.: +43 / 31 35 / 5 44 33-0  
[www.at.assmann.com](http://www.at.assmann.com)